



## *In this issue:*

<i>Page</i>		<i>Page</i>	
2	Winterkeep advertisement	13	Rainbow Bridge
2	Dishlickers Resort advertisement	13	Welcome New Members
3	Committee Contact Details	13	AMCV Embroidered Clothing
3	President's Message	14	Hypothyroidism
3	Working Dog Titles, New Champions & Show Point Score	16	Weight Pull Training Day photos
4	From the Secretary	17	General Meeting Minutes – 20 March
4	AMCV Website	19	General Meeting Correspondence List
4	Scale of Charges	22	Treasurer's Report
5	Activities Calendar	27	Dogs for Adoption
6	Sledding Training Day	28	Obedience Corner
7	Backpacking Event – Day Hike 11 May	29	2013 Show Point Score Competition Rules
8	Sledding Events	29	AMRAA donation request
9	Something to Howl About	29	State Cup Race Donation request
9	Are our dogs safe from BSL?	30	Breeders' Directory
10	Weight Pull Events	30	Members' Photos
11	Tawnee's Story	30	Dog & Driver Point Score Competition Rules
12	Obedience Practice & Puppy Socialising	31	Activities Day photos
13	I stood by your bed last night – Poem	31	Windchill Dog Gear advertisement

# Winterkeep

Winterkeep is a beautiful 4 bedroom rural holiday house set on 6 glorious acres in the Snowy Mountains. It is located at an altitude of 1200m and has superb views of the mountains. It is a short 20 minute drive to Jindabyne town centre and a 35 minute drive to the Ski Tube terminal. It is pet friendly and has a large fenced backyard as well as an enclosed and undercover wrap around balcony.

Whether it be a ski holiday in the winter or trout fishing, mountain biking, bushwalking in spring, summer or autumn, Winterkeep is a tranquil and beautiful place to stay to enjoy the majestic Snowy Mountains.



[www.winterkeep.com.au](http://www.winterkeep.com.au)

## Dishlickers Resort



### Pet Accommodation

40 indoor pens

Fully insulated kennel

Air-conditioned

Large exercise areas

Floor heating

Pick up & delivery service available

**Dishlickers is a distributor for  
Eagle Pack & Black Hawk pet foods & Delete Disinfectant**

Merv & Shelley Turner  
3 Martin Street, Pearcedale 3912  
Phone: 03 5978 6001 Mobile: 0438 381 772

*Dishlickers is the home of Katakū Alaskan Malamutes*



## Alaskan Malamute Club Victoria, Inc.

Registered No. A0016353X

**PATRON:** Mrs Olive Singer

**HONORARY LIFE MEMBERS:** Mrs. Dulcie Sullivan, Mrs. Sandy Koch & Mr. Ian Luke

### Postal Address:

PO Box 41, Hurstbridge VIC 3099

### General Enquiries:

Ralph & Sandy Koch  
9714 8540  
Email: [amcv@bigpond.com.au](mailto:amcv@bigpond.com.au)

### 2012/2013 Committee

#### President:

Antoinette Wagenvoort  
**0401 614 994**

#### Vice President (Breed Welfare):

Sandy Koch  
(03) 9714 8540

#### Vice President (Activities):

Ian Luke  
0417 103 615

#### Secretary

Marty Cord  
0425 776 295

#### Treasurer:

Ralph Koch  
(03) 9714 8540

#### Show Secretary:

Lorraine Green  
**5784 1849**

#### Puppy Registrar/Referral:

Michele Nimmo  
0422 338 779

#### Publicity/Education:

Ian Luke  
0417 103 615

#### Fundraising:

Sharen McPhan  
0410 192 210

#### Malamute Health:

Anna Paxton  
0403 758 664

#### Newsletter Editor:

Sandy Koch  
(03) 9714 8540

#### Obedience:

Marty Cord  
0425 776 295

#### Sledding:

Merv Turner  
5978 6001

#### Weight pull:

Melanie Gray  
0404 104 619

#### Backpacking:

Stuart Vanderpol  
0413 118 305

## President's Message

We are well into 2013 and lots going on. Easter is already over and I hope all the kids and big kids got spoilt with lots of chocolate eggs.

Our calendar has been so full with activities and I congratulate all those on the committee who continue to put so much of their time and effort into making each event a memorable and successful one.

Sadly, I am not always able to make the activity days due to 'showing' commitments, but I will endeavour to get to at least some of them.

I'd like to take this opportunity to also welcome the new members who have joined recently and hope that you enjoy all the activities and events our club has to offer. I also hope that I can meet you at an event soon.

*Antoinette Wagenvoort*



### AMCV Club Contact Details

PO Box 41, Hurstbridge VIC 3099, Ph: (03) 9714 8540  
Email: [amcv@bigpond.com.au](mailto:amcv@bigpond.com.au) Website: [www.amcv.org.au](http://www.amcv.org.au)

### Working Dog Titles

Please note that a \$30.00 application fee is payable upon submission of Working Dog Title applications. Applications must be submitted one month prior to the Annual General Meeting in order for awards to be presented at the AGM. Application forms for AMCV Working Dog Titles can be obtained from the Secretary or can be downloaded from the AMCV website Documents & Forms page at [www.amcv.org.au](http://www.amcv.org.au).

### New Champions

Members whose Alaskan Malamutes have gained an Obedience Title, Australian Champion Title, Grand Champion Title or have become a 500 point Champion are eligible for a medallion from the Alaskan Malamute Club, Victoria Inc. in recognition of their Malamutes achievement.

To receive a medallion, members must send a copy of the relevant certificates to the Show Secretary, Lorraine Green, PO Box 216, Broadford, Victoria, 3658 or email to [amcv@bigpond.com.au](mailto:amcv@bigpond.com.au).

The medallions will be presented at the next Annual General Meeting.

Notifications must be received prior to the 31st of August to enable the medallion to be engraved. If you need further details please contact the Show Secretary on 5784 1849.

### 2013 Show Point Score Competition

To enter in the 2013 Show Point Score Competition, please send a marked and signed catalogue (Malamute results & cover pages only) to the Show Secretary, Lorraine Green at PO Box 216, Broadford VIC 3658, or hand your catalogue to Nicole or Dale Green.

## From the Secretary...

Okay, so the Mallie season is off to a flying start with a wet and cold but thoroughly enjoyable Activities Day and our first ever weight pull training day which was a great success. Congratulations Mel and Merv for doing such a fantastic job and I hope all those that attended the events had a great time. I know I did. As the days draw shorter and the temperature drops to perfect Mallie weather we have a jam packed activities calendar ahead and I hope to see as many people and their fur kids out and about as possible. It was great to see some members at the General meeting on the 20<sup>th</sup> however more members would have been great. Just a note on the Mallie Mail too. All members are welcome to contribute to the content of our clubs publication be it with articles, jokes, pictures or an advertisement. Please forward content to Sandy at [amcv@bigpond.com.au](mailto:amcv@bigpond.com.au). Have fun and Stay Safe out there

Marty  
AMCV Secretary



## SCALE OF CHARGES

### Membership:

Joining fee	\$10.00
Single (VCA Member)	\$30.00
Non VCA	\$36.00
Double/Family (VCA Member)	\$35.00
Non VCA	\$48.00
Special Interstate (Non-voting)	\$25.00

### Other:

"A" Suffix Application	\$5.00
Ch'd Certification	\$10.00
Working Dog Title Application	\$30.00

### Malamute Mail Advertising:

#### Members' rates:

Inside front cover – colour	\$50.00
Full page	\$30.00
Full Page - copy ready	\$20.00
Half Page	\$20.00
Half Page - copy ready	\$15.00
Quarter page	\$5.00
Eighth Page: per issue	\$3.00
or per year	\$15.00
Stud Dog Register (1 year)	\$50.00
Breeders Directory (1 Year)	\$25.00
Puppy Register	\$25.00

Vale Notice (quarter page) Free.  
Normal rates apply for full and ½ pages.

### Non Members:

All advertising for non-members are double the rates listed above.

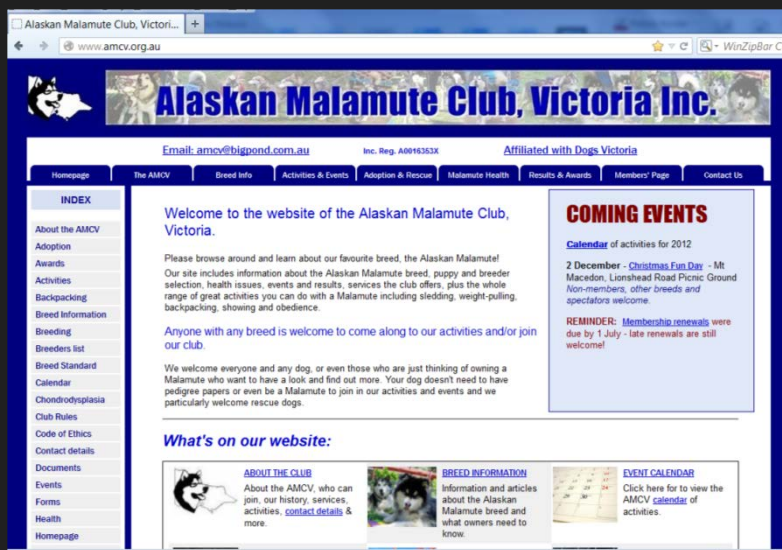
*All Advertisers who pay for a year's advertising will also have their ad placed onto the AMCV website at no extra cost.*

## MOVING?

Change of address notifications must be made in writing to the Secretary at  
PO Box 41, Hurstbridge VIC 3099  
or by email to  
[amcv@bigpond.com.au](mailto:amcv@bigpond.com.au)

This is the official organ of The Alaskan Malamute Club, Victoria Inc. (Incorporations Registration No. A0016353X). Subscription is by membership only. The Editor and Publisher reserve the right to edit all copy including advertisements. The club and the committee assume no responsibility for false claims or articles submitted by the public or individual members or persons. Any views submitted may not necessarily be those of the club or committee

## Have you checked out the AMCV Website?



[www.amcv.org.au](http://www.amcv.org.au)

## JUNE 2013 ISSUE

Copy Deadline: 1<sup>st</sup> May 2013

If you have any letters, photos, or items of general interest to the members please email them to the Newsletter Editor, Sandy Koch at  
[amcv@bigpond.com.au](mailto:amcv@bigpond.com.au)

or mail to: PO Box 41, Hurstbridge VIC 3099

# 2013 Activities Calendar

Please note that this calendar is subject to amendment at the discretion of the AMCV Committee and that scheduling of some events may be altered due to temperature restrictions. Please contact the AMCV or check the website to confirm event schedule & venues

Month	Day	Date	Activity	Event	Venue
<b>APRIL</b>	Sunday	7	Weight Pull	Weight Pull Competition 1	KCC Park
	Saturday	13	Show	Open Show	Bulla
	Sunday	21	Weight Pull	Weight Pull Competition 2 - ASTCV	KCC Park
	Sunday	28	Sledding	Sledding Training day	You Yangs
<b>MAY</b>	Sunday	5	Weight Pull	Weight Pull Competition 3	KCC Park
	Saturday	11	Backpacking	Day Hike 2	Blackwood
	Saturday	18	Sledding	Sled Dog Race - Event 1 + sledding training	You Yangs
	Sunday	19	Sledding	Sled Dog Race - Event 2	You Yangs
<b>JUNE</b> <i>Queen's B'day</i>	Wednesday	5	Meeting	Committee	Bulla
	<i>Sat - Mon</i>	<i>8 - 10</i>	<i>Sledding</i>	<i>Northern Victorian Sled Dog Classic</i>	<i>Kialla West</i>
	Sunday	9	Weight Pull*	Weight Pull Competition - ASTCV	KCC Park
	Saturday	15	Sledding	Sled Dog Race - Event 3	TBA
	Sunday	16	Sledding	Sled Dog Race - Event 4	TBA
	<i>Sat / Sun</i>	<i>29/30</i>	<i>Sledding</i>	<i>Gold Seekers Sled Dog Race (AMCV Point Score)</i>	<i>TBA</i>
<b>JULY</b>	Saturday	20	Sledding	Sled Dog Race - Event 5	TBA
	Sunday	21	Sledding	Sled Dog Race - Event 6	TBA
<b>AUGUST</b>	<i>Sat / Sun</i>	<i>3/4</i>	<i>Sledding</i>	<i>Falls Snow Race</i>	<i>Falls Creek</i>
	<i>Sat / Sun</i>	<i>10/11</i>	<i>Sledding</i>	<i>A5K Snow Race</i>	<i>Dinner Plain</i>
	Sunday	11	Weight Pull*	Weight Pull Competition - ASTCV	KCC Park
	<i>Sat / Sun</i>	<i>24/25</i>	<i>Sledding</i>	<i>State Cup – 3 heat race – Event 7</i>	<i>You Yangs</i>
	Wednesday	28	Meeting	Committee	Bulla
	Saturday	31	Backpacking	Day Hike 3	You Yangs
<b>SEPTEMBER</b>	Sunday	8	Weight Pull	Weight Pull Event 4 (Tuggy Shield)	KCC Park
	Sunday	15	Activities Obedience	Activities Introduction & Breed Information Obedience Practice Session	Templestowe – Birraring Park
	Friday	27	Show	Melbourne Royal Malamute judging	Showgrounds
<b>OCTOBER</b>	Saturday	5	Backpacking	1-day hike	TBA
	Thursday	10	Meeting	Annual General / Committee	Bulla
	Sunday	13	Weight Pull	Weight Pull Competition 5 - ASTCV	KCC Park
	Sunday	20	Backpacking	Picnic Fun walk	Brimbank Park
<b>NOVEMBER</b>	Sat -Mon	2-4	Backpacking	3-day Hike	TBA
	Sunday	3	Show	Championship	Sunbury
	Wednesday	13	Meeting	Committee	Bulla
<b>DECEMBER</b>	Sunday	1	Christmas Fun Day	Includes BBQ, Funny classes & Fun Agility Comp	Mt Macedon

\*not included in AMCV Annual Weight Pull Competition Events not conducted by the AMCV are in italics

For further details please go to the AMCV Website closer to the event date, or check the next issue of the Malamute Mail.

Email: [amcv@bigpond.com.au](mailto:amcv@bigpond.com.au)

Website: [www.amcv.org.au](http://www.amcv.org.au)

General Enquiries: Phone (03) 9714 8540

**EXTREME WEATHER POLICY & RESTRICTIONS:** Please note that temperature restrictions apply to some activities. In addition, events may be cancelled if forecast temperature on day of event is equal to or greater than 30°C, or in extreme weather conditions unless otherwise indicated. Please phone or email to confirm.

Thank you to all those who donated  
sashes for our Open Show.

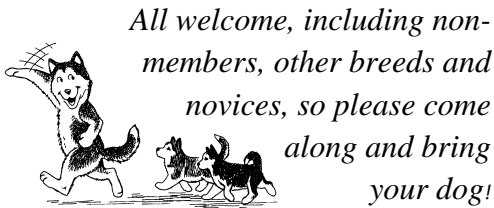
**Thank  
You**



Find us on  
**Facebook**

Please note change of date & venue  
**AMCV CHAMPIONSHIP SHOW**  
Sunday, 3 November at Sunbury

# Sledding Training Day



**This event is FREE!**

**Sunday, 28 April - 10 am – 2 pm**

**You Yangs Western Plantation** (near Little River)  
 Enter from Sandy Creek Road Melways – Page 11 – Ref C12

**Who can attend?** Members and non-members are welcome to attend with your dog(s), regardless of whether you and your dog are raw beginners or have done a bit of sledding, and whether you want to compete in sledding events or just run your dog in harness for fun and exercise.

The training session will include basic information about how to get started sledding with your dog, sledding equipment, basic trail rules, passing practice and a training run.

**Sledding Rules & General Information:** Participants will receive a copy of the AMCV's Sledding Introduction booklet which includes information on training, equipment, race rules, event preparation, dog health and other information about dog sledding and the events and programs the AMCV offers.



**Equipment:**

There will be some equipment available for sale or to borrow at the training session if you do not have your own equipment, but please bring your own equipment if you have it.

The dog shop will be there for equipment purchase or to get your dog measured for a harness.

If you wish to purchase specific products, please contact Windchill Dog Gear prior to the event so they will have it in stock for you – [orders@windchill.com.au](mailto:orders@windchill.com.au)

**Directions :**

From Melbourne – Take the Princes Highway towards Geelong. Take the Little River turn-off and follow signs to Little River. Cross the railway line in Little River then turn left into You Yangs Rd, then left into Farrars Rd and right into Branch Rd - proceed past the main park entrance. At the end of Branch Road, turn right into Sandy Creek Rd, after approx. 2 km at the bend in the road, turn left into the Western Plantation car park.

**Further Information**

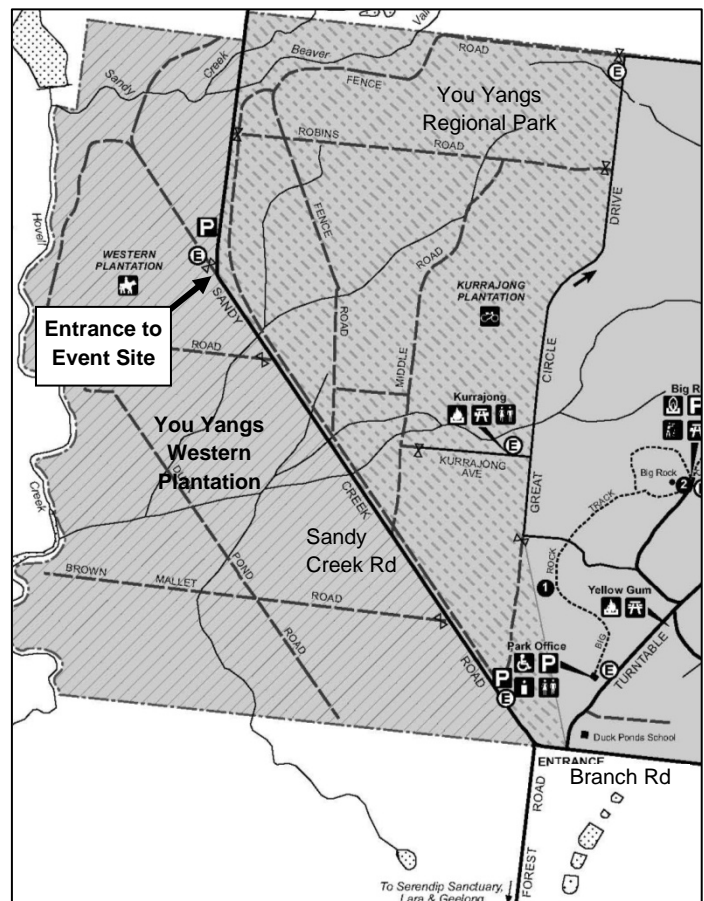
Phone: Merv Turner (Sledding Co-ordinator) 5978 6001 or Ian (Activities Vice President) 0417 103 615

Email: [amcv@bigpond.com.au](mailto:amcv@bigpond.com.au)

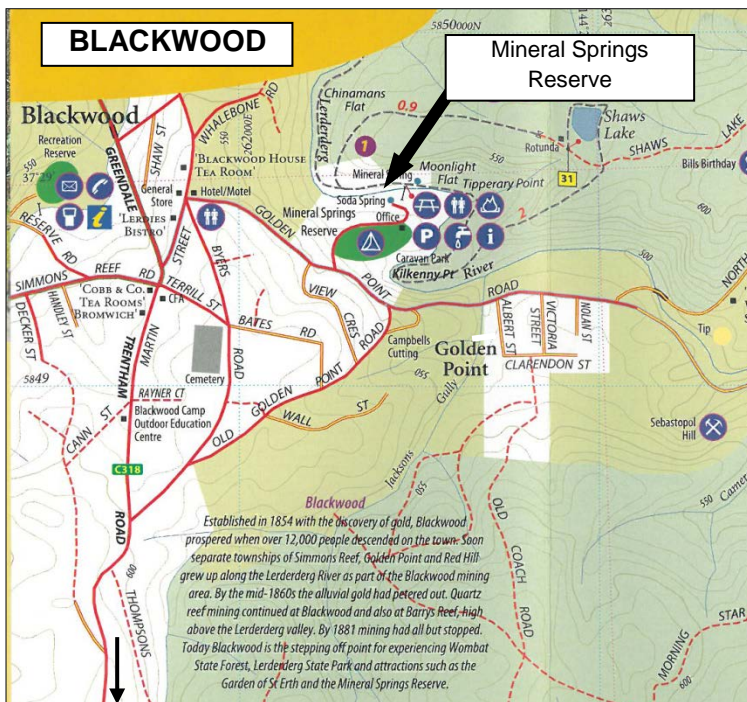
Website: [www.amcv.org.au](http://www.amcv.org.au)

**All Welcome - bring your dogs!**

We also welcome non-members & other breeds



# BACKPACKING EVENT – 1-Day Hike



To Greendale

### What to bring:

Sturdy lead & collar, canine backpack, weight for the backpack (pre-weighed), water & water bowl for your dog, basic first aid items, rubbish bags, sensible footwear, warm & waterproof clothing (the weather can be unpredictable), human backpack, food & drink, sunscreen, hat, insect repellent, etc. Please load and weigh your dog's backpack to roughly the correct weight at home, this will save time on the morning of the walk.

**NOTE:** A first aid kit will be on hand, but walkers must carry their own basic first aid items. **Dogs are to be kept on lead at all times** and remain the responsibility of their owner/handler.

**Cost:** \$3.00 per member or \$5.00 per Family and \$2.50 per car for entry to reserve

**Backpack Hire:** \$5.00 per day – please contact co-ordinator to book a club backpack

**Facilities at Mineral Springs Reserve:** Toilets, Picnic tables

**Further information:** Phone Stuart Vanderpol on 0413 118 305 or Sandy on 9714 8540  
Email: amcv@bigpond.com.au

**SATURDAY, 11 MAY**  
**BLACKWOOD**

Mineral Springs reserve, Golden Point Road

**Please arrive by 8.30 am to register**  
Hike starting at 9.00 am sharp – do not arrive late!

**Hike Distance:** Approximately 16 km

**Terrain:** Generally undulating with one very steep section

**NOTE:** Please notify the Backpacking Coordinator if you are interested in coming in case the event needs to be cancelled or rescheduled.

### How to get there:

From Melbourne: follow the Western Highway past Myrningong. Take the Greendale turn-off and turn right, heading under the freeway. Continue along Greendale Trentham Road to Blackwood, go to Town centre in Blackwood. Turn right at the Motel onto Golden point Road then taking the left turn to the caravan park then proceed straight ahead to Mineral Springs Reserve. Hike registration will be on your right at the far end of the picnic ground.

### Who can participate:

**ALL DOGS OVER 12 MONTHS OLD WELCOME.**

Please note that dogs must be 18 months old to carry weight to the Working Pack Dog title standard.

**Non-members and other breeds are welcome.** You and your dog need to be reasonably fit, but you don't have to walk the entire distance and your dog does not have to have a backpack or carry any weight - it's up to you and your dog.

### Extreme Weather Policy

Please note that a temperature restriction applies to this activity. In addition, events may be cancelled in extreme weather conditions. If unsure, please phone or email to confirm.

**NOTE: THE EVENT MAY BE CANCELLED IF THE FORECAST TEMPERATURE IS 25°C OR OVER.**

If in doubt please contact the Backpacking Co-ordinator, Stuart Vanderpol, the day before the hike

### Working Pack Dog Title:

This backpacking day will be a qualifying event for the Working Pack Dog title and Associate Working Dog Certificate for dogs over 18 months of age only. The rules for the Working Pack Dog title are available from the Backpacking Co-ordinator.

You will require a sturdy backpack which is sufficiently large to hold the required weights. The weight should be made up of something that is dense yet can mold to the shape of your dog: bags of damp sand and/or a soft pack of water (similar to the bladder of a wine cask) are suitable. Anyone attempting a walk should also carry a backpack containing some basic first aid items (dog & human), food (dog & human), drink (dog & human), water bowl and wet weather gear (as the weather dictates).

Your dog must carry 30% of its body weight for a minimum of 16 km for a walk to count towards the title - a dog weighing 40 kg would therefore have to carry 12 kg of weight, which is the equivalent of 12 litres of water. This is too much weight for an untrained and/or unfit dog to be expected to carry. Obviously you will need to train your dog, gradually adding more weight, before you can consider tackling the full load, and your dog will need to be fit and in excellent physical condition.

The only decrease in the weight carried by the dog on a backpacking trip may be by NORMAL consumption of food or water by your dog. What your dog doesn't drink must get poured back into the container he is carrying, and the final pack weight must be no less than 75% of the initial pack weight.

Please watch your dog carefully for signs of stress, and please remove the weight from his pack and shorten your walk if you feel that he is not coping well. You know your dog best, and it is up to you to recognise and act appropriately if he is struggling.

# 2013 SLEDDING EVENTS



Date	Event	Venue	Schedule	Event details
28 April	<b>SLEDDING TRAINING DAY</b>	You Yangs Western Plantation	10 am to 2 pm (See separate event details)	Includes sledding introduction and training, practice sledding run.
18 May	<b>EVENT 1</b> 1 heat event & training	You Yangs Western Plantation <i>*Lighting required</i>	Training Workshop: 1.00 pm Check In: 3.00 pm Drivers' Meeting: 3.30 pm Start: from 4.00 pm	Approximate Distances: Novice – 1.5 km 1-dog – 2.5 km 2-dog – 4.5 km 4-dog - 6 km 6-dog – 6 km  <i>*possible earlier start for 4/6-dog classes on Sunday</i>
19 May	<b>EVENT 2</b> 1 heat event	You Yangs Western Plantation	Check In: 7.00 am Drivers' Meeting: 7.15 am *Start: 7.45 am	
8-10 June	<b>Northern Victorian Sled Dog Classic</b> <i>Non-AMCV Event – Pre-entry required</i>		Further details will be available from the Northern Victorian Sled Dog Club <i>NB: This event does NOT count towards the AMCV Sledding Point Score</i>	
15 June	<b>EVENT 3</b> 1 heat event	You Yangs Western Plantation <i>*Lighting required</i>	Training Workshop: 1.00 pm Check In: 3.00 pm Drivers' Meeting: 3.30 pm Start: from 4.00 pm	Approximate Distances: Novice – 1.5 km 1-dog – 3 km 2-dog – 5.5 km 4-dog* - 7 km 6-dog* – 7 km  <i>*possible earlier start for 4/6-dog classes on Sunday</i>
16 June	<b>EVENT 4</b> 1 heat event	You Yangs Western Plantation <i>*Lighting required</i>	Check In: 7.00 am Drivers' Meeting: 7.15 am *Start: 7.45 am	
29/30 June	<b>Gold Seekers Sled Dog Race</b> <i>Non-AMCV Event – Pre-entry required</i>		Further details will be available from the Gold Seekers Sled Dog Club. <i>NB: This is an AMCV Sledding Point Score event</i>	
20 July	<b>EVENT 5</b> 1 heat event	You Yangs Western Plantation <i>*Lighting required</i>	Training Workshop: 1.00 pm Check In: 3.00 pm Drivers' Meeting: 3.30 pm Start: from 4.00 pm	Approximate Distances: Novice – 1.5 km Other classes: <i>to be advised</i>  <i>*possible earlier start for 4/6-dog classes on Sunday</i>
21 July	<b>EVENT 6</b> 1 heat event	You Yangs Western Plantation <i>*Lighting required</i>	Check In: 7.00 am Drivers' Meeting: 7.15 am *Start: 7.45 am	
24/25 August	<b>EVENT 7</b>	You Yangs Western Plantation	State Cup race - 3-heat race <i>*Lighting required</i>	Details in the June newsletter
3/4 August	<b>FALLS CLASSIC</b>	Falls Creek	Website: <a href="http://www.fcsdc.net">www.fcsdc.net</a>	<i>Non-AMCV event: Pre-entry only</i>
10/11 Aug	<b>ALTITUDE 5000 SNOW RACE</b>	Dinner Plain	Website: <a href="http://sleddogchallenge.com">sleddogchallenge.com</a>	<i>Non-AMCV event: Pre-entry only.</i>

**Please note the following for sledding events\*:**

*\*Does not apply to Private Races*

- Entries:** Entries will be taken on the day. Entries will not be accepted after the commencement of the Drivers' Meeting.
- NOTE:** **4-dog & 6-dog classes - pre-entry & lighting required for all events.** Contact Merv or Ian to pre-register (*details below*)
- Camping:** Camping is permitted at the You Yangs Western Plantation.
- Rules:** AMCV Gig & Sled Race Rules. Drivers must wear safety helmets and carry sidecutters.  
*Private Races:* rules available from race organisers. NOTE: these rules may differ from AMCV rules.
- Classes\*:** 1-dog, Limited 2-dog, Limited 4-dog, Limited 6-dog, Pee Wee, Junior, Veterans, Novice (if sufficient entries).
- Lighting:** Suitable battery operated bike lighting is required. The additional use of a head lamp is also recommended. (Dynamo powered lighting is not suitable).

**Entry Fees:**

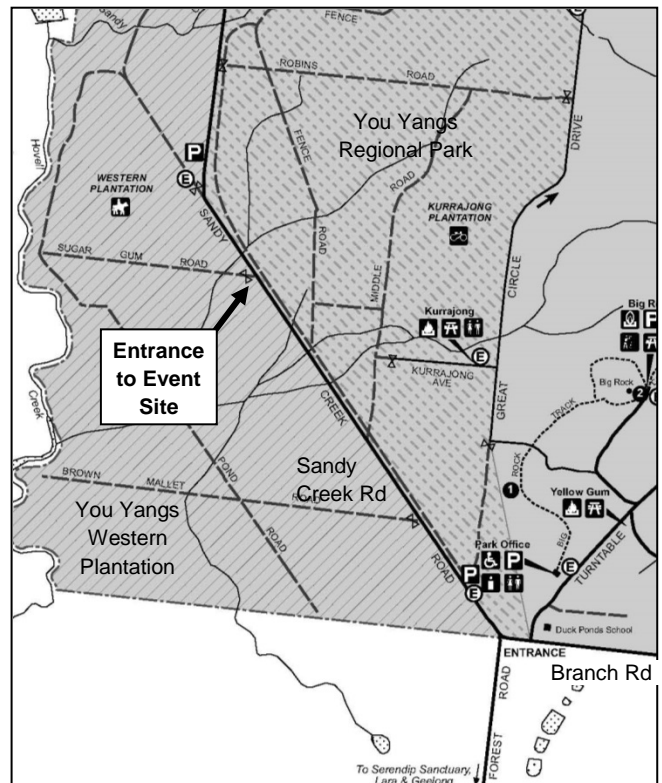
- Members:** Single heat events: \$8.00, Multi-heat events: \$12.00, Second entry (same driver, different class): \$6.00 (Single heat event), \$10.00 (multi-heat event)
- Season Ticket: \$45, Second Season ticket (same Driver): \$35. (covers all AMCV sledding events)
- Non-members:** Single heat events: \$10.00  
Multi-heat events: \$15.00
- Pee Wee, Junior & Veterans: \$2.00 (Members and Non-members)
- Novice: \$5.00

**Directions to Sledding Event Site:**  
**You Yangs Western Plantation, Sandy Creek Road**  
(near Little River)

**From Melbourne:**  
Take the Princes Highway towards Geelong. Take the Little River turn-off and follow signs to Little River. Cross the railway line in Little River then turn left into You Yangs Road, then left into Farrars Road and right into Branch Road. At the end of Branch Road turn right into Sandy Creek Road, watch for AMCV signs on your left (approx. 2 km along Sandy Creek Road), turn left through the gate and follow signs and diamond markers\* to the race site.

**Further Details:**

For pre-entry (4- & 6-dog class only) or further information, contact the Sledding Co-ordinator Merv Turner on 5978 6001 or Ian Luke on 0417 103 615 - email: [amcv@bigond.com](mailto:amcv@bigond.com)





Has your dog got ...

# SOMETHING TO HOWL ABOUT

If your dog has had a birthday, gained a title or achieved something to be proud about, then why not share it with us by sending in a photo and a few lines of text.

FREE TO MEMBERS!!! Entries for "Something To Howl About" can be sent to the Newsletter Editor, PO Box 41, Hurstbridge, Vic, 3099. or email to [amcv@bigpond.com](mailto:amcv@bigpond.com)



## Happy Birthday Zorro!

Wishing Zorro a Happy 2<sup>nd</sup> Birthday for 9 March, from Mum & Dad, Mel & Alex Gray.

## Happy 10<sup>th</sup> Birthday!

Happy birthday to the Windchill Kaos litter, Maple, Timber, Baloo and Bronte who turned 10 on 31 March.



# Are Our Dogs Safe From BSL?

Well, they aren't Pitbulls, so of course they are. Right? Er, well no, not exactly.

I recently attended a presentation on the up dated position of Victoria's so called "Dangerous Dog Laws". I was already horrified by them, but what I learnt there horrified me. They truly are dangerous dog laws!

The existing Laws permit your Local Council to declare your dog "dangerous" if it behaves (or is believed to have behaved) in an aggressive manner. This can include "rushing" (ie running at someone whilst growling), chasing a cat, injuring a small animal, and growling at someone.

They may seem reasonable, but what happens if your Malamute runs up to someone talking and yodelling away in typical Mallie fashion and the someone doesn't understand the friendly greeting for what it is? Or a cat jumps at your dog as you walk down the street? (This scenario ACTUALLY happened and the on lead malamute was declared dangerous and put to sleep). Or a small dog rushes at your dog, who reacts normally and naturally to a threat?

You have a dangerous dog. Best case scenario is a hefty fine, some not so lovely signs around your home and a colourful new collar. Worst case scenario is a hefty fine, a court appearance and a dead dog.

And that's the good part of the legislation!

The really bad part is that which allows the Council to seize any dog that looks like a bull type breed and kill it. Regardless of behaviour, temperament or breeding, if it (very) roughly fits the physical description set out in the Law, it can be killed.

Owners do not have the right to refuse to hand over their dog. The Law gives Council workers the right to enter a property and seize. And they can, simply by swearing an oath that they believe you own such a dog, get a warrant that allows them to kick in your front door and take your dog.

Some owners have fought and won. It's involved spending tens of thousands of dollars in legal fees, days in front of the Supreme Court, and months of stress. And upon winning, they get handed a bill from the Council for boarding (and if you and I were to keep our dogs in the conditions some of the Councils employ, we'd be charged with neglect and animal cruelty.)

The American Staffordshire Terrier has some protection- providing the dog has an Australian National Kennel Council issued pedigree. But the English Staffordshire Terrier has none- at first it wasn't thought necessary, but sadly that is proving wrong, and so for them and other bull breeds, the hard won concessions achieved by Dogs Victoria mean nothing.

But all of this means nothing as far as we Arctic's are concerned, right?

Er, well, not exactly, no...

You see, the way the Legislation stands, the Minister for Agriculture has the power to add any breed, at any time, for any reason. ANY breed. ANY time. ANY reason. No debate. No passage through Parliament.

Any breed? Well, if the current approach continued, then replace "breed" with "general description"- and a general description of an Arctic is likely to capture Malamutes, Akitas and Siberian Huskies. All it needs is a tragic incident involving either of those three breeds to capture the media spotlight, and our politician will jump to protect votes.

But wait, there's more...just like a bad ad for a crappy set of steak knives, our canine unfriendly Government just keeps on giving. Previously, you could find a stray, drop it in to your local vet, who would scan for a microchip and speed our wandering Fido on his way home. Today, that Good Samaritan act will cost our friendly local vet a \$700.00 fine.

The Government DEMANDS that all strays go to the pound. Many councils are contracting out their animal management services. One of the major beneficiaries of these contracts is The Lost Dogs Home. The Lost Dogs Home just happens to be the lone voice in favour of the current Legislation. It just happens to have posted a profit of in excess of \$12 Million in the last financial year. And it just happens to kill seven out of every ten dogs that go through its doors.

Still think our dogs are safe?

What can we do? Email your local Member of Parliament. Remind them that we own dogs and we vote. You can see the email I sent at [www.ianrluke.wordpress.com](http://www.ianrluke.wordpress.com). Don't copy it word for word. But please, for our dogs sake, send our politicians a message!

Ian Luke

# 2013 Weight-Pull Events

**ENTRIES TAKEN ON THE DAY – NO PRE-ENTRY REQUIRED**

## Venue:

KCC Park - Westernport Highway (Dandenong-Hastings Road), Skye  
(Approx. 1.5 km south of Thompsons Road roundabout) Melways Map Reference 128 H 12

## Weightpull Event Format & Schedule:

Events will be conducted as per AMCV Weight-Pulling rules – copies of the rules are available on the AMCV website at [www.amcv.org.au](http://www.amcv.org.au) or from the Weight-pull Co-ordinator.

Competitors are asked to arrive in plenty of time to register, weigh-in and organise equipment if necessary. The AMCV & ASTCV have weight pull harnesses available in a range of sizes that competitors can hire for the event (fees below).

Event Number	Date	Venue	Registration / Weigh-in	Start time
Event 1	7 April	KCC Park	9.45 – 10.15 am	10.30 am
Event 2*	21 April	KCC Park	9.45 – 10.15 am	10.30 am
Event 3	5 May	KCC Park	9.45 – 10.15 am	10.30 am
ASTCV Event*	9 June	KCC Park	9.45 – 10.15 am	10.30 am
ASTCV Event*	11 August	KCC Park	9.45 – 10.15 am	10.30 am
Event 4	8 September	KCC Park	9.45 – 10.15 am	10.30 am
Event 5*	13 October	KCC Park	9.45 – 10.15 am	10.30 am

\* Events being conducted by the American Staffordshire Terrier Club of Victoria (ASTCV).  
The ASTCV events on 9 June and 11 August are not included in the AMCV Annual Weight Pull Competition.

**Registration, Weigh-in and Practice:** Competitors are asked to arrive in plenty of time to register, weigh-in and hire equipment if necessary. Competitors are welcome to practise in the weight-pull chute prior to commencement of the event.  
**PLEASE NOTE THAT LATE ENTRIES WILL NOT BE ACCEPTED.**

**Eligibility:** Any dog over 18 months of age (but not bitches in season) may compete in an AMCV weight-pull event. For AMCV Weight Pull Events: Prizes awarded for all breeders, but only purebred ANKC registered Alaskan Malamutes will be eligible for major prizes and to participate in AMCV Annual Weight Pull Competition. Any dogs exhibiting aggression or owners exhibiting unsportsmanlike or abusive behaviour may be asked to leave the competition venue at the discretion of the organisers.

## Entry Fees:

ENTRIES WILL BE TAKEN ON THE DAY  
NO PRE-ENTRY REQUIRED.

### AMCV / ASTCV Members:

First entry \$8.00, subsequent entries \$6.00.

### Non-members:

First entry \$12.00, subsequent entries \$10.00

## Harness Hire Fees:

\$5.00 per harness, plus \$15.00 bond  
(bond is refundable upon return of harness)

## Further Information:

AMCV Events: Phone: Mel Gray 0404 104 619 Email: [amcv@bigpond.com.au](mailto:amcv@bigpond.com.au)  
ASTCV Events: Phone Lincoln Hancock - 0409 135 800 Email [amstaff@live.com.au](mailto:amstaff@live.com.au)

## AMCV ANNUAL WEIGHTPULL COMPETITION RULES

Classes on offer will be:

< 36kg, 36kg – 45kg, 45kg - 55kg, Unlimited

The requirements of the AMCV Weight Pulling Rules apply – copies are available from the Weightpull Co-ordinator or website [www.amcv.org.au](http://www.amcv.org.au).

### Eligibility

For a dog to be eligible for the Annual Weightpull Class Titles and Top Weightpull Dog of the Year award, the following applies:

- the owner/handler of the dog must be a current financial member at the time of the event for that result to be eligible, and must be a member at the conclusion of the annual competition.
- the dog must be a purebred ANKC registered Alaskan Malamute;
- the owner/handler must provide the dog's registered name and registration number on the entry form.

In addition, to constitute an event in a class there must be a minimum of two (2) eligible competitors in that class. If, during the course of the year, there are less than two (2) eligible competitors in a weight category no award will be given, however that dog may still be eligible for the Top Weightpull Dog of the Year award.

\*Subject to amendment in the event of changes to the event schedule



**\* NOTE – Events may be cancelled if forecast temperature on day of competition is over 25°C.**

Please contact the relevant Weight Pull Coordinator to confirm

3: Event 5 2012 - 7 October 2012 will count towards the 2013 annual competition.

Event 5 2013 – 13 October 2013 will count towards the 2014 annual competition

## Extreme Weather Policy

Please note that a temperature restriction applies to this activity. In addition, events may be cancelled in extreme weather conditions. Please phone or email to confirm if you are unsure.

## Weight Classes\*:

- Up to 36 kg class
- 36 – 45 kg class
- 46 - 55 kg class
- Unlimited class

\*Additional weight class will be available for Am Staffs only.

NB: Dog's weight is rounded down to nearest whole kilogram to determine weight class.

**ALL BREEDS WELCOME**

## Class Awards

Class awards will be determined on the basis of a dog's highest three (3)\* weights pulled in that weight class out of the maximum five (5) eligible events\*. A dog that has competed in less than three (3) events is not excluded from eligibility for class awards. Annual awards will be provided for 1<sup>st</sup>, 2<sup>nd</sup> and 3<sup>rd</sup> place in each eligible weight class. In the event of a tie, a joint award will be provided.

### Top Weightpull Dog of the Year Award

The Top Weightpull Dog of the Year title will be awarded to that dog that has achieved the highest combined weight/weight ratio calculated from that dog's best three (3) results\* achieved in any of the weight classes from the five (5) eligible events\*. Results will be calculated to 2 (two) decimal places. In the event of a tie a joint award will be provided.

### Nominated Events

The events in which results are eligible towards the end of the year awards are listed in the Activities Calendar in the Malamute Mail and on the AMCV website [www.amcv.org.au](http://www.amcv.org.au). Please note that the event schedule is subject to amendment at the discretion of the AMCV and that weather restrictions may apply.

Weightpull event results will be published in the Malamute Mail or can be obtained from the Weightpull Co-ordinator.

# Tawnee's Story

Tawnee would not be alive if it wasn't for the Lost Dogs Home willingness to release her to the AMCV only. I'm so happy to be finally able to say that Tawnee is trialling in a new home with a wonderful family. This family has waited months for her to get through all the health issues she endured. Her weight in the beginning was 24.5kgs and last I heard she had reached a healthy 31kgs.

After her stint in the pound, she came down with a severe case of kennel cough, then a few weeks later suffered intermittently with a serious bowel infection and the past couple of months was concerning as it was believed she had a heart condition, as she was prone to still coughing even after a few courses of antibiotics and becoming very weak and has even collapsed a few times. One of those times was after chest and spine x-rays at the vets and her blood pressure dropped and she collapsed on the way out and went blue for a few minutes and had to be given an atropine injection to bring her back. Due to her low blood pressure, the vet was unwilling to prescribe any form of anti-anxiety drug to help her with the severe separation anxiety she displayed and also couldn't trial her on any heart drugs without a very expensive cardiac ultrasound performed to diagnose exactly what the problem was, so the vet could prescribe her the correct medication. All this was needed before she would be ready to start her new life with her new waiting family and there was a concern that the excitement and stress of such a move could cause her heart to fail.

Her vet had a new machine to measure blood pressure but the results were inconclusive, so she really needed the cardiac ultrasound and as we had already spent so much and really could not afford another \$450 for the test and having no guarantees it would be of any help anyway, we couldn't manage to go ahead with it and although her waiting family had been waived an adoption fee for taking her, if it wasn't for their willingness to fund \$300 towards the test and her wonderful foster carer, Polla, funding the \$150 balance – we wouldn't know what we do now and I am SO thankful to them both!

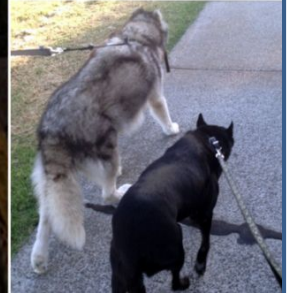
It was awesome to discover that the Cardiologist couldn't find any heart problems, in fact he said has the heart of a 5 yr old ☐ The collapsing is believed to be due to excitement which causes her blood pressure to be affected and this is something that has possibly come about due to the seriousness of her kennel cough and pulmonary disease it has caused. This is my understanding of it. She was put on more antibiotics and cortisone for her cough and was started on endep for her anxiety condition. As her desexing caused urinary incontinence, she has been on medication for that from the beginning and she has also been put on anti-inflammatories for her spine, as she has Spondylosis along the lumbar and cervical discs – arthritis in her spine, which was also triggering the intermittent weakness in her back legs when inflamed.

Tawnee is half way through her trial and doing incredibly well, no real issues whatsoever and her severe anxiety and separation issues have been kept exceptionally well under control with the medication and far, far better than I expected or could have ever dreamed for. A great deal of this success is due to her new family working so well with her and she gets to go to work with her new Mum and hang out with the tradie's there, so she's not lacking in attention. I have a great feeling about her new family and wanted to be sure before announcing "TAWNEE'S GOING GREAT ON TRIAL.... YAY!!!!" NEVER thought this day would be possible a few months back.

Of course, this wonderful success has only been truly possible because of **one** person - **Polla**. I will never be able to thank her enough for all the time, effort, love and dedication she has given Tawnee 24/7 over these past months. Tawnee was only supposed to have stayed a few days max but due to all her ongoing health issues, Polla generously chose to keep Tawnee with her and work on her emotional as well as physical issues as she is in walking distance of our wonderful vet, Adrian from Kilsyth Vet Clinic, who is also a friend of Polla's. It was a MASSIVE task Polla undertook as our dear, sweet Tawnee was one helluva hard case in so many ways!!

I have no doubt whatsoever that without the dedication of Polla, a successful trial a new home without major issues would have been an impossibility due to Tawnee's obsessive behaviour with the main carer she focuses on...especially during the first few weeks of transition. I seriously don't think I could have found any family who would have not only been willing but able to put in the hard yards and persevere for weeks on end and work on Tawnee's frantic behaviour like Polla did for our beautiful girl. Polla, you're AWESOME!

I have no doubt whatsoever that without the dedication of Polla, a successful trial a new home without major issues would have been an impossibility due to Tawnee's obsessive behaviour with the main carer she focuses on...especially during the first few weeks of transition. I seriously don't think I could have found any family who would have not only been willing but able to put in the hard yards and persevere for weeks on end and work on Tawnee's frantic behaviour like Polla did for our beautiful girl. Polla, you're AWESOME!





# Obedience Practice & Puppy Socialising

*Being held in conjunction with the Rottweiler Club of Victoria.*

*No Malamute is too young or old to learn...*

**What to Bring:** Your dog, limited-slip collar or strong fixed collar (correction collars are not recommended for positive approach training, however may be used if handler prefers), 4 foot (120cm) lead, plenty of soft treats (such as diced cooked sausage) water and water bowl for your dog.

**Venue:** When you get to the venue (listed below), please register with the Rottweiler Club and pay your fee.

**Restrictions:** Please bring proof of vaccination to your first class. Puppies must be at least 13 weeks of age.

**Costs:** \$5 per session, or \$20 for 5 sessions.

**When:** Obedience practice sessions are held weekly (except in winter & over the summer break) at the following times:

Date	Starting	Venue / Directions	For further Information
Tuesday evenings	7.00 pm	<b>Bulla:</b> Calabria Club, 5 Uniting Lane, Bulla <i>Melways Map Ref. 177 F8</i>	Check the Rottweiler Club of Victoria website: rottweilerclubofvictoria.com
Wednesday evenings	7.00 pm	<b>KCC Park,</b> Westernport Highway, Skye (1.5 km south of Thompsons Rd) <i>Melways Map Ref. 128 H 12</i>	



### Equipment

- Limited-slip or **STRONG** fixed collar preferred
- Lots of small soft treats for your dog!
- Webbing or leather lead – 4 foot (120 cm)
- Bowl and water for your dog

### Optional:

- Long lead (8 - 12 foot) for stay and recall exercises.

### Basic Rules

All obedience participants are required to abide by the following rules:

- The use of pinch or prong collars is strictly prohibited.
- Dogs must be on lead at all times, unless otherwise directed by your instructor.
- You must always clean up after your dog
- Have some means of tethering your dog, preferably by chain or cable, whether it be to your car or a secure dog-stake.
- Bring along water and a waterbowl for your dog.
- Never bring a sick dog to any event.
- ABUSE OF DOGS IS STRICTLY FORBIDDEN - physical or verbal.
- Approach other dogs with caution – Malamutes are not always going to be friendly towards each other or other breeds, particularly same sex.
- Bait may be used discretely – dropped bait must be picked up immediately.
- Respect other dog's space and watch that you are keeping your dog at a reasonable distance from others at all times.

**Further Information:** Email: [amcv@bigpond.com.au](mailto:amcv@bigpond.com.au) or phone the Obedience Co-ordinator, Marty Cord on 0425 776 295.

**ALL WELCOME**  
 Young, old, obedient or naughty dogs, we want to see them all there!

You do not need to be a member or have a registered Malamute to join in, other breeds also


**NOTE:** Obedience practice sessions may be cancelled if the temperature forecast for the day of the event is for 30°C or over, or in extreme weather conditions. Please check with the Rottweiler Club for confirmation.

## I stood by your bed last night

I stood by your bed last night, I came to have a peep.  
 I could see that you were crying, you found it hard to sleep.  
 I whined to you softly as you brushed away a tear,  
 "It's me, I haven't left you, I'm well, I'm fine, I'm here."  
 I was close to you at breakfast, I watched you pour the tea,  
 You were thinking of the many times, your hands reached down to me.  
 I was with you at the shops today, Your arms were getting sore.  
 I longed to take your parcels, I wish I could do more.  
 I was with you at my grave today, You tend it with such care.  
 I want to reassure you, that I'm not lying there.  
 I walked with you towards the house, as you fumbled for your key.  
 I gently put my paw on you, I smiled and said "it's me."  
 You looked so very tired, and sank into a chair.  
 I tried so hard to let you know, that I was standing there.  
 It's possible for me to be so near you every day.  
 To say to you with certainty, "I never went away."  
 You sat there very quietly, then smiled, I think you knew,  
 in the stillness of that evening, I was very close to you.  
 The day is over... I smile and watch you yawning  
 and say "good-night, God bless, I'll see you in the morning."  
 And when the time is right for you to cross the brief divide,  
 I'll rush across to greet you and we'll stand, side by side.  
 I have so many things to show you, there is so much for you to see.  
 Be patient, live your journey out ... then come home to be with me.

*Author unknown*





# Rainbow Bridge

*We say a sad farewell to the following Malamutes who have now passed over the rainbow bridge, and our sympathies go to their owners on the loss of their much-loved family member.*

**Cruiser**  
*BISS Ch Siarnak Sarcan Cruiser*  
*Owned, bred & loved by James Ganson*

*Welcome New Members!*

*Melissa Zerbe & Richard Mitchell*  
*Melinda Magdich*  
*Paul Baggio*



## AMCV Clothing

### Jackets \$45.00 (+ \$12.00 P&H)

Long sleeve polar fleece jacket with full length zip, pockets and embroidered AMCV logo.

The following colours & sizes are in stock:

Medium: Red, Burgundy

XL: Orange, Red

### Vests - \$35.00 (+\$12.00 P&H)

Sleeveless polar fleece vest with full length zip and embroidered AMCV logo.

XL: Orange

### Caps - \$15.00 (+ \$8.00 P&H)

Peaked cap, one size fits all, embroidered with AMCV logo.

Available in the following colours: Red, Black, Burgundy, Royal blue

### Beanies - \$15.00 (+ \$8.00 P&H)

One size fits all, embroidered with AMCV logo.

Available in the following colours: Black, Dark Grey

**Limited stock - First in, first served!**

Payments accepted by direct deposit (please email for account details) or by cheque/money order made out to "Alaskan Malamute Club, Victoria Inc."



The following article is reprinted from <http://www.mirage-samoyeds.com/thyroid3.htm>

# Hypothyroidism Article Part 1

By John Cargill MA, MBA, MS and Susan Thorpe Vargas MS, Ph.D

Hypothyroidism is a common and serious genetic problem in purebred dogs. There is virtually no breed of dog unaffected. The scope of the problem cannot be accurately defined because of a lack of complete statistical information; however, it is certain that veterinarians are seeing and treating a lot of thyroid cases. Because of a degree of inheritance associated with hypothyroidism (too little) genetic screening has become a necessity for the conscientious breeder, rather than an option. First, let's get a handle on the thyroid gland; what it is and what it does.

## Systems Concept

Think of the thyroid gland as the crystal that sets the clock speed on your computer. If it produces too much or too little, the body system may malfunction because the various interconnecting subsystems can't interface properly. Together with the pituitary gland, the thyroid gland "calls cadence" for the many interconnected systems of the body, serving much like a combination thermostat, rpm governor, pressure regulator in mechanical systems.

Because the thyroid gland plays such a large role in regulation of the body, any disturbances in the thyroid system can cause serious problems in many of the body's other subsystems. The telephone company analogy of thyroid functions is a good one: while the telephone switching central neither originates calls or receives calls, it schedules and directs traffic flow interfacing cable, microwave and satellite transmissions. It matters not how well your individual telephone and telephone lines are working, or how well those of the person to whom you would speak are working, if there is a problem with the telephone central.

Built into the body are many self-compensating properties or control mechanisms. Using the telephone company analogy, if a satellite fails, message traffic may be routed through other systems such as land lines and microwave radio or through other satellites. Each of these systems has a capacity and a rate of throughput, and variable degrees of interface with other systems. Even when the telephone central loses some of its capacity to function, message traffic can be rescheduled to off peak hours. Similarly, when the thyroid system loses some of its function, other systems and subsystems may function, but at reduced levels of efficiency and operating tempo. In the case of a reduced capacity telephone central operating off of standby generator power, the whole system becomes vulnerable to other insults such as terrorism, floods, electrical storms and computer malfunction. The telephone switching central then has less ability to compensate for these problems and to self-repair or direct repairs in subsystems in a timely manner. And so it is also with the thyroid system, because, in great part, it influences the immune system of the body.

As the immune system becomes depressed or compromised, the whole body system becomes more and more vulnerable to the insults characteristic of everyday living, and the body system as a whole becomes less competent to respond to those insults. In fact, if the malfunctions are of a particular type, various subsystems of the body may refuse to recognize other subsystems as "self" and will even attack those other subsystems, much as the security force of a telephone switching central may refuse to allow repairmen in to fix the telephone switching central computers because the computer that contained the approved repair personnel access list had its hard drive crash.

## Thyroid Gland

Now let's get directly to the thyroid gland and examine its properties and functions keeping in mind the above analogies as a framework for understanding. In the dog, the thyroid gland consists of two lobes flanking the trachea (windpipe). It has been established that it secretes at least two related hormones thyroxin (T4) and triiodothyronine (T3). The only difference between the two is that T4 has four iodine atoms attached to it and T3 only has three. Even though the thyroid gland secretes mostly T4 (about 90%), it is T3 that is considered the active form of the hormone.

## Conversion of T4 to T3

In a series of complex steps that involve mainly the liver and kidneys, T4 is stripped of an iodine atom and is converted to T3 when needed. Initially, the two forms are released into the blood and are bound to proteins in the plasma (the clear fluid of the blood). Less than 1% of the T3 and less than 0.1% of T4 remain in the unbound state in the blood. One of the thyroid tests commonly ordered checks for the amount of circulating or 'free' T4 and 'free' T3. The bound thyroid hormone is transported by the blood to their target cells. Only unbound or 'free' hormone is able to enter cells. Once they pass through the cell membrane they bind again to another protein. This attachment process signals a receptor within the cell nucleus and activates the synthesis of various metabolic enzymes. These enzymes are what regulate the body's 'set point' or 'idling speed'. This basal metabolic rate governs the body's rate of oxygen consumption and energy expenditure, which in turn effects heat production. This is why we use up energy keeping warm and why hypothyroid individuals are cold intolerant.

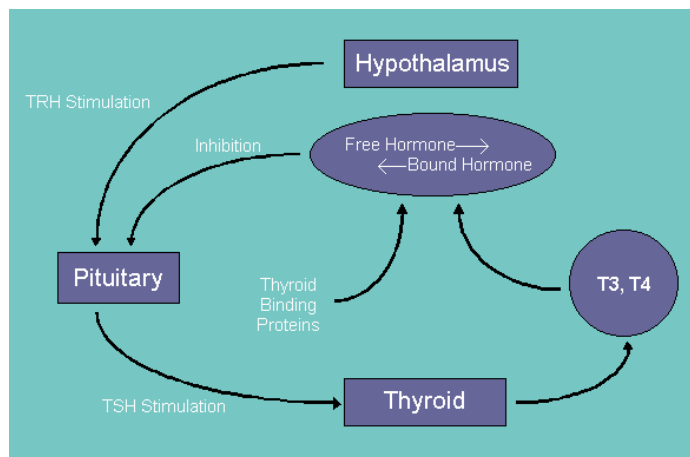


Figure 1. Hypothalamic-Pituitary Axis

## Control Mechanism

Internal modulation of hormone levels is a complex process in that thyroid hormones are not secreted at a continuous rate, but rather demonstrates the classical physiological example of negative feedback. One can liken negative feedback to a heating thermostat. Once levels of free circulating thyroid hormone have fallen to a certain plasma concentration, thyroid releasing hormone (TRH) is secreted by the hypothalamus. TRH in turn stimulates the release of thyroid stimulating hormone (TSH) from the anterior pituitary which 'turns on' the synthesis of thyroid hormone. (See Figure 1.) Another function of TSH is to maintain the structural integrity of the thyroid gland. Inadequate levels of TSH cause the thyroid gland to atrophy. This is one reason why early diagnosis and intervention of thyroid disorders is so necessary. Once the thyroid gland has atrophied, it cannot recover. Secretion of TSH is 'turned off' when plasma

concentrations of thyroid hormone are sufficient and is turned back on again when levels fall once more.

Regulation of thyroid hormone levels is accomplished through a negative feedback mechanism involving the hypothalamus gland secreting TRH which in turn stimulates the pituitary gland to secrete TSH which stimulates the thyroid gland to produce T3 and T4 thyroid hormones. The amounts of unbound thyroid hormone further regulate the process by affecting the levels of TSH secreted by the pituitary.

General Clinical Signs	Skin Problems
Lethargy Exercise Intolerance Obesity Mental dullness Cold intolerance	Alopecia "Rat" tail Dry, brittle coat Pigment changes in skin and coat Seborrhea Chronic otitis externa Skin thickening (myxedema) Poor wound healing Persistent infection (pyoderma)
Cardiovascular Signs	Eye Problems
Abnormally low heart rate (bradycardia) Cardiac arrhythmias	Fatty deposits of the cornea Corneal ulceration Uveitis
Vestibular Signs	Blood Disorders
Circling	Anemia · Elevated cholesterol levels Coagulation irregularities
Neurological Signs	Reproductive Functions
Weakness Knuckling Seizures Ataxia Facial nerve paralysis	Cycle irregularities Prolonged anestrus Cycle cessation Diminished libido Low birth weights Spontaneous Abortions Excessive lactation (galactorrhea) Testicular atrophy
Gastrointestinal Signs	
Diarrhea Constipation	

**Clinical Signs**

Clinical signs of the disease vary greatly because of the myriad of systems the thyroid hormone impacts. Most owners are alerted to a problem when changes in the dog's coat occur. This is frequently the first symptom of which they become aware. The classical signs include alopecia or hair loss on both sides of the trunk or specifically on the tail, i.e., the 'rat' tail. Hair re growth is usually slow and may come in dry, dull or differently colored. The skin may also change color and becomes greasy, strong smelling and thickened. The dog may gain weight easily, becoming lethargic, mentally dull and exercise intolerant. Chronic ear infections have also been noted.

Observed also are severe behavior changes and neurological symptoms including unprovoked aggression, head tilt, seizures, ataxia, circling and facial nerve paralysis. Additionally, reproductive functions such as prolonged anestrus and fertility rates may be affected. It is obvious from this list (see Figure 2.) that this is a serious disease and one that needs to be caught early.

**Causes of Hypothyroidism**

Two questions are particularly relevant to breeders: What causes canine thyroid disease? Is the incidence of hypothyroidism increasing? Most cases of hypothyroidism are the end stage result of autoimmune thyroiditis. This is a condition where the immune system attacks the tissues of the thyroid gland. The body is able to compensate for this by stimulating the thyroid to secrete greater levels of hormone, but eventually glandular reserves are depleted and the individual is unable to produce enough hormone to sustain clinical health. One of the ways to assess this condition is to look for the presence of antithyroid antibodies, specifically, thyroglobulin autoantibody (TgAA). An improved test for TgAA, made by Oxford BioMedical is now commercially available, and although not as yet a definitive diagnostic test, it is the best available marker for autoimmune thyroiditis at this time.

Although it is clear that there is a genetic predisposition for thyroid disorders we would also suggest that there are environmental factors like diet, nutrition, and exposure to chemical toxins, that at the very least will trigger the onset of disease in the genetically susceptible individual. We know that the body's capacity to maintain homeostasis when exposed to changes in its environment depends in the way it able to detoxify itself. This ability responds in many complex ways to changes in the levels of thyroid hormone. Environmental toxins, nutritional deficiencies and allergies are external factors that can affect our perception of the prevalence of thyroid disease. (See Figure 3.)

Category	Found in	Effects
<b>Pollutants</b>		
Thiocyanates	Metal processing, foods such as walnuts, sorghum, cassava, almonds and apples	Inhibit thyroid gland ability to concentrate iodine
Phenolic compounds	Plastic and wood processing, and glues	Block conversion of T4 to T3
Halogenated benzenes	Mothballs, toilet deodorizers	May induce toxic effect on the thyroid gland
Chlorinated compounds	Solvents, plastics, rubber processing	Compete with thyroid hormone and/or plasma binding proteins responsible for transport
Polychlorinated biphenyls		Enhance biliary excretions of circulating T4
<b>Nutrients</b>		
Selenium	Vegetables, cereals, meats	Activates the enzyme that catalyzes conversion of T4 to T3
Iron	Vegetables, cereals, meats	Iron deficiencies lower thyroid function
Allergens	Soy, lactose, vegetables, cereals, meats	

For more information and to read this article in full please visit the link below.

[www.mirage-samoyeds.com/thyroid3.htm](http://www.mirage-samoyeds.com/thyroid3.htm)

# Weight Pull Training Day

Photos thanks to Donna Treadwell & Marty Cord





**THE ALASKAN MAL THE ALASKAN MALAMUTE CLUB, VICTORIA, INC.**

*Incorporations Registered No. A0016353X*

Minutes of a General meeting of the Alaskan Malamute Club, Victoria, Inc., held at the Calabria Club, Bulla on  
**Wednesday, 20 March 2013** commencing at 7.30 pm.

**Present:** Antoinette Wagenvoort (Chair), Marty Cord, James Ganson, Melanie Gray, Dale Green, Lorraine Green, Nicole Green, Ralph Koch, Sandy Koch, Ian Luke, Colin McPhan, Sharen McPhan, Michele Nimmo, Merv Turner, Stuart Vanderpol

**Apologies:** Anna Paxton

The meeting commenced at 7.40 pm.

<b>AGENDA ITEMS</b>	
<p><b>1.</b>     <b><u>Apologies</u></b> Apologies were received from: Anna Paxton <b>Motion: That the apologies be accepted.</b> <i>Moved:</i>     I Luke    <i>Seconded:</i>     M Nimmo</p>	<b>CARRIED</b>
<p><b>2.</b>     <b><u>Minutes of Previous Meeting</u></b> The minutes of the previous meeting on 29 March 2012 published in the June 2012 issue of The Malamute Mail. <b>Motion: That the minutes of the General meeting held on 29 March 2012 be accepted as received.</b> <i>Moved:</i>     I Luke    <i>Seconded:</i>     M Turner <b>Motion: That the minutes of the Committee meeting held on 29 March 2012 be accepted as a true and accurate record.</b> <i>Moved:</i>     I Luke    <i>Seconded:</i>     C McPhan</p>	<b>CARRIED</b>
<p><b>3.</b>     <b><u>Correspondence</u></b> <b>3.1 Incoming</b> As the incoming Correspondence List was unavailable to members, it was agreed that incoming correspondence be accepted as per received by the Committee.</p>	
<p><b>3.2 Outgoing</b> As the outgoing Correspondence List was unavailable to members, it was agreed that outgoing correspondence be accepted as per received by the Committee. <b>Motion: That the correspondence as tabled be accepted.</b> <i>Moved:</i>     J Ganson    <i>Seconded:</i>     D Green</p>	<b>CARRIED</b>
<p><b>4.</b>     <b><u>Treasurer's Report</u></b> – Ralph Koch The treasurer's reports for July 2012 through to January 2013 were presented. <b>Motion: That the Treasurer's reports for July 2012 to January 2013 be accepted.</b> <i>Moved:</i>     R Koch   <i>Seconded:</i>     M Gray</p>	<b>CARRIED</b>
<p><b>5.</b>     <b><u>Co-ordinators' Reports</u></b> <b>5.1 Vice President (Breed Welfare)</b> – Sandy Koch The AMCV had a breed stand at the Melbourne Pet &amp; Animal Expo held at the showgrounds in February. Our display received a lot of interest and as well as the Committee who attended, Simon Kirkpatrick and Kaya and Tracey McDonald were thanked for helping out. Tracey brought her Siberian Husky along which was very helpful in making comparisons between the 2 breeds. <b>Referral &amp; Puppy Register</b>– Michele Nimmo <i>Puppy Register:</i> There have been no litters on the puppy register. <i>Referrals:</i> Since annual meeting in Nov, there have been 40 Malamutes or Mal x's rescued or rehomed directly via AMRAA and 35 known to be via other rescue groups, pounds and shelters. There are approximately 55 Malamutes or crosses in need of a home that is known of at present. Majority is in NSW with AMRAA at approx. 25, followed by Qld with approx. 14 known about. The rest is divided between Vic, SA and WA. Tawnee, recently rehomed was a major win for the AMCV/AMRAA liaison due to being released directly to the AMCV from the LDH in November of last year. (They refuse to work with rescue). Also, the combination of AMCV/AMRAA assisted us to rescue from Northern Grampians Shire, who are just starting to work with rescue and as of today, the Latrobe City Council are planning to allow us as first point of call for the Malamutes and Malamute x's. We are still awaiting the confirmation of a meeting with the RSPCA in Burwood between AMCV and their Behavioural team, so Malamutes can be released to the AMCV for rehoming. The RSPCA are not responding to requests to arrange to meet. AMRAA would like to make a request for assistance of any kind – worming, flea products, bowls, sponsoring or direct tax deductible donations. AMRAA have rescued 5 Malamutes this past week in NSW with more to come in and need to rescue at least 3, possibly 4 in Vic. NO adoption fees are coming in to help cover any costs. <b>Publicity &amp; Education</b> – Ian Luke I've been promoting our events thru face book, with not only our own Group, but with the Am Staff Club and with AMRAA, thanks to Michele. We had a good turnout at the Activities Day, and the weight pull training day promises to be even bigger.</p>	
<p><b>Malamute Health</b> – Anna Paxton</p>	

No Report received	
<p><b>5.2 Vice President (Activities) – Ian Luke</b></p> <p><b>Show Secretary’s Report – Lorraine Green</b></p> <ul style="list-style-type: none"> <li>• I hope the Point Score Trophies were acceptable I was able to come in under budget my trophy man certainly gave me a good price.</li> <li>• He has a suggestion to update the Breeder of Best Exhibit Trophy which is certainly behind by years.</li> <li>• Received from VCA approval of our Open Show Schedule.</li> <li>• Mr Carl Liepman - Judge comes highly recommended. Show will be held at Goonawarra which has been arranged with the Vic Women’s Club. Catering is done by Jean Baldwin which she charges \$14 per head.</li> </ul> <p><b>Backpacking Report – Stuart Vanderpol</b> The first fun walk event for the year scheduled for 10 March was cancelled due to the hot weather. The next hike will be on the 6<sup>th</sup> of April at Mt Macedon. Hope to see you all there.</p> <p><b>Sledding report – Merv Turner</b> Welcome to a new season 2013 .This year all the races will be held at the You Yangs. In doing this hopefully more can attend to enjoy the chance to have a go at harnessing your dog. There will be plenty of equipment to use from scooters, harnesses, etc. For those that want to know how to make your own lines I will have the chance to show you. For those that would like to learn let me know so I can tell you what you need to bring along. The training day I will show you what you need &amp; how to go about making some. There will be a toilet at each event. Distances will be varied starting short &amp; building up to the cup at the end of the season. Hopefully we will have all classes 1 dog, 2 dog and 4 dog If we have enough we can run juniors &amp; peewees. The emphasis will be to enjoy yourselves &amp; keep your dog happy &amp; safe. See you at the training day</p> <p><b>Weight pull report – Mel Gray</b> I’m starting to get really excited &amp; nervous at the same time for the AMCV first ever weight pull training day. Thank you again for everyone’s support &amp; offers to help assist on the day. Also thank to the Am Staff club for passing the information onto their members. So all I ask for now is perfect weather &amp; that everyone especially the furkids have a great time.</p> <p><b>Obedience – Marty Cord</b> Obedience Training has been back in action since 6<sup>th</sup> January at Bulla and 7<sup>th</sup> January at KCC Park. Not many Malamutes are attending however everything continues to run smoothly at Bulla. There are a few issues arising at KCC Park that require investigation and these are in progress. Hope to see more Malamutes attending in the future.</p>	
<p><b>5.3 Newsletter – Sandy Koch</b> The newsletter has undergone a facelift over the past few issues, and as always we welcome any feedback or suggestions for content from the members. Everyone should have received their February Malamute Mail. The April Malamute Mail is just underway so I will still be accepting items up until Monday 25 March – the full colour inside front cover is still available for this issue.</p>	
<p><b>5.4 Fundraising – Sharen McPhan</b> Well, fundraising has started the year well, with a number of items being put up for auction on our Facebook page. Thank you to Antoinette and Ian for posting the photos and monitoring the auctions. Seven of the items were bid on and won, which raised a total of \$185 for the club. Thank you to everyone who participated in the auctions. The items that didn’t sell will be either auctioned or raffled at a later date. Our Open Show is coming up on the 13<sup>th</sup> April at Bulla and, providing we get a good turnout, we will be holding a raffle and Guess the Lolly Jar. I’m sure we will be doing the Cadbury Fundraising Chocolates again in the near future. If anyone is interested can you please let me know, so I know how many boxes we need to order. I will also put a notice on the Facebook pages</p>	
<p><b>5.5 Secretary – Marty Cord</b> Since the last General Meeting there has been a lot of correspondence as you can see from the folder. I have been very busy learning the ropes and I hope you can all bare with me as I gain the experience I need to do this job well.</p>	
<p><b>Motion: That the Vice-Presidents’ and Co-ordinator’s reports as presented be accepted.</b></p> <p>Moved: J Ganson                      Seconded: M Gray</p> <p style="text-align: right;"><b>CARRIED</b></p>	

<b>6. GENERAL BUSINESS</b>	
<p><b>6.1 Business Arising from Correspondence</b> Accepted as per the Committee’s decisions.</p>	
<p><b>6.2 2013 Show Point Score Presentations</b> Awards were presented to the winners of the 2012 Show Point Score competition.</p>	

**7 OTHER BUSINESS****7.1 2013 Open Show Donations**

There are still some blank spaces on the list for donations for trophies and sashes for open show in April.

**8. NEXT MEETING**

Annual General Meeting: Thursday, 10 October 2013

*The meeting was declared closed at 8.15 pm*

**CORRESPONDENCE LIST**

For the General Meeting held on 20 March, 2013 at the Bulla Exhibition Centre

**Incoming Correspondence** - received since previous General Meeting

Reference No.	Date Rec'd	From	Subject
1262	1/2/12	Premier of Queensland	Thanks for donation to disaster appeal
1263	4/2/12	ASTCV	Response re weight pull events
1264	8/2/12	Dogs Victoria – K Benson	At a Glance newsletter – 8 Feb
1265	20/2/12	Dogs Victoria – K Benson	At a Glance newsletter – 20 Feb
1266	5/2/12	Dogs Victoria – K Benson	At a Glance newsletter – 5 March
1267	6/3/12	Vets' All Natural	Obesity information
1268	8/3/12	Fruitbowl Productions	Invitation to Paws in the Park event – 25 March
1269	8/3/12	ASTCV	Weight pull event arrangements
1270	13/3/12	Pooch Magazine	Request for feedback on Alaskan Malamute article
1271	14/3/12	NVSDC	Trophy & Sash donation request
1272	18/3/12	Kim Jenkins	Re Malamute Cancer database
1273	19/3/12	Dogs Victoria – K Benson	At a Glance newsletter – 19 March
1274	20/3/12	Alpine Shire	Dinner Plain dog permit application
1275	22/3/12	Shellie Shewring	Letter of complaint re AMCV Facebook group
1276	23/3/12	Dogs Victoria – R Jones	Bulla Meeting Room booking confirmation & keycode
1277	23/3/12	Pooch Magazine	Revisions to Alaskan Malamute article
1278	25/3/12	Paula Roberts	Complaint re AMCV Facebook discussions
1279	8/3/12	ASTCV	Weight pull event arrangements
1280	1/4/12	Dogs Victoria	Non-Dogs Victoria Members Insurance levy
1281	11/4/12	Bendigo DSE	Permit application form for Knowsley & One Eye Forests
1282	13/4/12	Dogs Victoria – J Banks	Notice of Presidents' & Secretaries' Meeting – 19 August
1283	16/4/12	Alpine Shire	Dinner Plain Dog permit for snow weekend
1284	16/4/12	Dogs Victoria – K Benson	At a Glance newsletter – 16 April
1285	26/4/12	Dogs Victoria – R Jones	Bulla Meeting Room booking confirmation & keycode
1286	30/4/12	Dogs Victoria – K Benson	At a Glance newsletter – 30 April
1287	27/2/12	Bendigo Bank	Changes to Oxfam account – 1 April 2012
1288	2/5/12	Bendigo DSE	Permit for sledding events in Knowsley & One Eye Forests
1289	14/5/12	Dogs Victoria – K Benson	At a Glance newsletter – 14 May
1290	17/5/12	Lort Smith – V Kochan	Requesting cage sponsorship
1291	21/5/12	Utility Dog Club, Vic	Seeking donation of Best of Breed Trophy
1292	22/5/12	RASV	Requesting donation of class awards Royal Melbourne Show schedule
1293	1/6/12	Department of Justice - CAV	Annual statement reminder, Annual statement form, Committee members list
1294	12/6/12	Dogs Victoria – K Benson	At a Glance newsletter – 12 June
1295	25/6/12	Bendigo Bank	Changes to Oxfam account – 1 July 2012 Business Account Terms & Conditions booklet
1296	25/6/12	Dogs Victoria – K Benson	At a Glance newsletter – 25 June
1297	1/7/12	Dogs Victoria – M Degan	Non-Dogs Victoria Members Insurance levy form
1298	9/7/12	Dogs Victoria – K Benson	At a Glance newsletter – 9 July
1299	13/7/12	Dogs Victoria - R Jones	Confirmation of meeting room booking & keysafe code
1300	16/7/12	Nillumbik Shire	Invitation to Nillumbik Pet Expo – 28 October
1301	July 2012	Cadbury	Fundraiser chocolate information
1302	23/7/12	Dogs Victoria – K Benson	At a Glance newsletter – 23 July
1303	24/7/12	J & L Davey	\$200 donation in memory of Rob's birthday
1304	24/7/12	S Black, Mornington Peninsula Community Dog Club	Request for information on weight pulling for newsletter
1305	24/7/12	Nicole Green	New champions, ROA and WDT applications
1306	30/7/12	Dogs Victoria – J Davidson	KCC Park booking for weight pull on 16 September

Reference No.	Date Rec'd	From	Subject
1307	31/7/12	Mitchell Shire Council	Invitation to Mitchell Pet Expo, Wallan – 17 November
1308	3/8/12	Stan Popovich	Pet articles for publication
1309	6/8/12	Dogs Victoria – K Benson	At a Glance newsletter – 6 August
1310	22/8/12	Dogs Victoria – K Benson	At a Glance newsletter – 22 August
1311	24/8/12	Dogs Victoria - R Jones	Confirmation of meeting room booking & keysafe code for 27/8
1312	3/9/12	ASTCV	Payment for use of weight pull facilities at KCC Park
1313	19/9/12	Dogs Victoria – R Jones	Non-availability of meeting room for 13 November
1314	20/9/12	Consumer Affairs Victoria	Annual statement by Public Officer form
1315	24/9/12	Dogs Victoria	Club headings renewal form
1316	2/10/12	B Williams	Copy of AMCA Newsletter - May 1984
1317	2/10/12	Dogs Victoria	Re Bulla booking for 11 November
1318	4/10/12	Melanie Gray	RSVP for AGM
1319	5/10/12	Dogs Victoria - R Jones	Confirmation of meeting room booking & key safe code for 11/10
1320	10/10/12	All Trophies	Order invoice – AGM awards
1321	15/10/12	Mitchell Shire Council	Invitation to Mitchell Pet Expo – Wallan, 17 November
1322	15/10/12	Mari Anile	Obedience Training
1323	17/10/12	Dogs Victoria	Non-Dogs Victoria Insurance Levy form
1324	17/10/12	Dept of Justice - CAV	Legal changes affecting incorporated associations
1325	15/10/12	Dogs Victoria – K Benson	At a Glance newsletter – 15 October
1326	29/10/12	Dogs Victoria – K Benson	At a Glance newsletter – 29 October
1327	29/10/12	Lisa Mccracken	Obedience Training
1328	30/10/12	Effie Dimitriou	Obedience Training – Stop Howling
1329	02/11/12	Dogs Victoria	AMCV required meeting information
1330	05/11/12	Paws in the Park	Certificate of Appreciation
1331	07/11/12	Karen Benson	Promote your breed at the 2013 Pet Expo
1332	07/11/12	Fran Caselin	Proposed ring change for members comp
1333	07/11/12	K Benson – Dogs Victoria	Invitation to Melbourne Pet & Animal Expo – 2/3 Feb 2013
1334	08/11/12	Ferne Grey	Enquiry re: AMCV activities and obedience training.
1335	11/11/12	David Cumming	Request for information on Weight Pulling
1336	11/11/12	Jeanne Toulmin	Enquiry regarding using her Malamute at stud and Geelong Malamute club.
1337	13/11/12	Michelle Hill	Rehoming enquiry
1338	15/11/12	All Trophies	Thank you for recent order
1339	20/11/12	doMore	Student Lead for AMCV – request for information
1340	20/11/12	Knox City Council	Invitation to Eastern Regional Pet Expo
1341	26/11/12	K Benson – Dogs Victoria	DOGS Victoria at a glance 26 November
1342	26/11/12	Sharen McPhan	Change of Address
1343	27/11/12	Dogs Victoria	Insurance Certificate 2013, Judge List, Show Forms etc
1344	27/11/12	Steve Rowan - Canidae	Response to Sponsorship Proposal
1345	7/12/12	K Benson – Dogs Victoria	Application for Dog Lovers Show close strictly 15 <sup>th</sup> December
1346	12/12/12	Nick Kordaris	Query re shaving an Alaskan Malamute
1347	12/12/12	K Benson – Dogs Victoria	DOGS Victoria at a glance 11 December
1348	19/12/12	Pakamon Amaritawarin	Requesting obedience session information
1349	04/01/13	Knox City Council	Invitation to Eastern Regional Pet Expo
1350	07/01/13	B Laycock – Fruitbowl Productions	Invitation to Eltham Vet Practice Paws in the park – 7 April
1351	7/1/13	Craig Guesdon	Seeking assistance for impounded Malamutes
1352	09/01/13	Tiffany Evans	Membership enquiry
1353	10/01/13	Mari Anile	Seeking a Dog Sitter
1354	16/01/13	K Benson – Dogs Victoria	Melbourne Pet & Animal Expo – Exhibitor Info Attached
1355	20/01/13	K Benson – Dogs Victoria	Melbourne Pet & Animal Expo – – Safety Information
1356	28/01/13	Jamie & Chloe Jamieson	Puppy enquiry
1357	29/01/13	K Benson – Dogs Victoria	DOGS Victoria at a glance 29 January
1358	30/01/13	K Benson – Dogs Victoria	Melbourne Pet & Animal Expo – Final Layout
1359	01/02/13	K Benson – Dogs Victoria	Dogs Victoria Draft Calendar
1360	01/02/13	Dogs Victoria	Draft 2014 calendar & offer of financial assistance for clubs
1361	05/02/13	Steve Rowan - Canidae	Sponsorship Proposal
1362	12/02/13	Julie Dinh	Request for weight pull Information
1363	15/02/13	Janet Davidson – Dogs Victoria	Weight Pull Dates for 2013
1364	18/02/13	Emilly Hage	Enquiry regarding giant Alaskan Malamutes
1365	22/02/13	Fran Caselin – Dogs Victoria	Meeting Room Confirmation & keysafe code - 27/2/13
1366	23/02/13	Tanya Hynes – Dog Society	Advertising Dog Society website and services
1367	24/02/13	Mike Brown	Enquiry re owning Malamutes in warmer climates

**Outgoing Correspondence** - sent since previous General Meeting

Ref No.	Date:	Sent To:	Subject:
1105	2/2/12	RASV – J Grainger	Re: request for dog demo / display at 2012 Royal Melbourne Show
1106	7/2/12	D Cavender	Re: coat problem enquiry
1107	8/2/12	AMCA – Dan Anderson	Guidelines of AMCV Ch'd scheme
1108	9/2/12	AMCV – Dan Anderson	Re: Ch'd Scheme & Ch'd affected dogs in Russia
1109	16/2/12	S Stankovic	Associate Working Weight Pull Dog title notification
1110	26/2/12	ASTCV – S Stankovic & L Hancock	Weight pull event arrangements for 2012.
1111	10/3/12	Vets' All Natural	Sponsorship request.
1112	13/3/12	You Yangs Regional Park	Requesting permit for sledding events
1113	13/3/12	NVSDC	Confirming donation for 1 <sup>st</sup> Malamute teams
1114	21/3/12	Pooch Magazine	Suggested changes to Alaskan Malamute article
1115	22/3/12	Shellie Shewring	Acknowledging receipt of letter re AMCV Facebook Group
1116	26/3/12	Paula Roberts	Acknowledging receipt of letter of complaint
1117	27/3/12	RASV – J Grainger	Re: request for dog demo / display at 2012 Royal Melbourne Show
1118	5/4/12	Dogs Victoria	Championship Show schedule & payment for advertisement
1119	6/4/12	Alpine Shire	Dinner Plain Permit Application for snow weekend
1120	7/4/12	Bendigo DSE	Request for permit application for Knowsley & One Eye State Forests
1121	13/4/12	Paula Roberts	Response to concerns regarding Facebook discussions
1122	13/4/12	Dogs Victoria	Non-Dogs Victoria Insurance levy payment – 1/10/2011 – 31/3/2012
1123	18/4/12	Vets' All Natural	Requesting sponsorship for sledding & weight pull events.
1124	21/4/12	Ford Kinter	Requesting that Parks Victoria be listed as an "interested party" on insurance certificate
1125	22/4/12	Shellie Shewring	Response to complaint regarding Facebook discussions
1126	30/4/12	Bendigo DSE	Permit application for use of Knowsley & One Eye for sledding events
1127	22/4/12	Parks Victoria	Signed permit for use of You Yangs for sledding events
1128	1/5/12	Sandi Shrager	Query regarding distribution of health survey
1129	11/5/12	Bendigo DSE	Signed permit for use of Knowsley & One Eye for sledding events (see incoming mail)
1130	3/6/12	Dogs Victoria – R Jones	Cancellation of meeting room booking – 5 June 2012
1131	9/7/12	Dogs Victoria	Non-Dogs Victoria Insurance levy payment – 1/4/2012 – 30/6/2012
1132	21/7/12	Dogs Victoria	Booking for weight pull at KCC Park on 16 September
1133	27/7/12	S Black, Mornington Peninsula Community Dog Club	Response to request for information on weight pulling
1134	2/8/12	Sanda Stankovic & Lincoln Hancock - ASTCV	Updated weight pull advertisement
1135	10/8/12	Joan & Leon Davey	Thank you for donation: card and copy of August Malamute Mail
1136	3/9/12	Computer Sashes	Order – show place ribbons & Tuggy Weight Pull Shield sashes
1137	18/9/12	All Trophies	Trophy, plaque and medallion order for AGM awards presentation
1138	20/9/12	Dogs Victoria – R Jones	Re: non-availability of meeting room for 13 November
1139	28/9/12	A Wagenvoort, F Parker, V Winther, J Ganson, N Green, S Kirkpatrick, B Acht, M Gray	Invitation to AGM Awards presentation
1140	2/10/12	Dogs Victoria	Booking Form for Bulla – 11 November
1141	15/10/2012	Mari Anile	Obedience Training reply
1142	18/10/12	Dogs Victoria	Club Heading renewal & payment – standard size
1143	18/10/12	Dogs Victoria – J Davidson	Changes to Club Heading in Dogs Victoria magazine
1144	22/10/12	Consumer Affairs Victoria	CAV Change of details form
1145	27/10/12	VCA	Non Dogs Victoria Levy form payment
1146	30/10/12	Lisa McCracken	Obedience Training – Training Reply
1147	07/11/12	CAV	Annual Statement by Public Officer
1148	07/11/12	DOGS Victoria	Annual Accounts office bearers and committee form
1149	08/11/12	Ferne Grey	Re: AMCV activities and obedience training.
1150	17/11/12	Jeanne Toulmin	Re: using her Malamute at stud and Geelong Malamute club.
1151	14/11/12	David Cumming	Re: request for information on Weight Pulling
1152	21/11/13	Steve Rowan - Canidae	Requesting Sponsorship of AMCV
1153	21/11/13	Phillipa Clark – 4 Paws & More	Requesting Sponsorship of AMCV
1154	25/11/12	Fran Caselin	AMCV – Bulla Room Booking 20 March
1155	12/12/12	Nick Kordaris	Response to query re: shaving an Alaskan Malamute
1156	12/12/12	Karen Benson	Application for Dog Lovers Show close strictly 15 <sup>th</sup> December
1157	19/12/12	Pakamon Amaritawarin	Re: request for Obedience session information
1158	09/01/13	Tiffany Evans	Re: Membership enquiry
1159	11/01/13	Mari Anile	Re: seeking dog Sitter
1160	21/01/13	Craig Guesdon	Re: request for assistance for impounded Malamutes
1161	29/01/13	Jamie and Chloe Jamieson	Re: Puppy enquiry
1162	02/02/13	Judy Locke – Parks Victoria	Request to conduct AMCV sledding events at You Yangs Western Plantation
1163	16/02/13	Lauren Jonno	Re: Membership Enquiry
1164	17/02/13	Julie Dinh	Re: request for Weight pull information
1165	19/02/13	Emilly Hage	Re: Query regarding giant Alaskan Malamutes

**ALASKAN MALAMUTE CLUB VICTORIA, INC.**

Incorporations No. A0016353X

Financial Reports prepared by the Treasurer for the General Meeting held on 20 March, 2013 at the Bulla Exhibition Centre.

1. Bank reconciliation
2. Details of cheques written
3. Statement of income & expenditure

**Financial Report for July 2012****1. STATEMENT OF BANK RECONCILIATION as at 31 July 2012**

		\$	\$	\$
<b>Total Members Funds as of:</b>	<b>1 July</b>			<b>13736.26</b>
Cheque account balance as of	1 July	<b>5803.62</b>		
Plus income		1862.00		
Less expenditure		1890.96		
Cheque account balance as of	30 July 2012	<b>5774.66</b>		
Less unrepresented cheques		100.00		
<b>Total as per Cash Book as of:</b>	<b>30 July 2012</b>		<b>5674.66</b>	
Plus balance of Investment account as of:	1 July	8547.10		
Plus interest on Investment account		9.25		
<b>Bendigo Investment Account total as of:</b>	<b>30 July 2012</b>		<b>8556.35</b>	
<b>Total Members Funds as of:</b>	<b>30 July 2012</b>			<b>14231.01</b>
<b>Representing a PROFIT for the month of:</b>	<b>July 2012</b>			<b>494.75</b>

**2. CHEQUES WRITTEN for the month of July 2012**

Chq No.	Date	Payee	Category	Details	Amount \$
770	1/07/2012	C McPhan	Sledding	Sledding expenses – prizes, Portaloo hire, cones	474.56
771	6/07/2012	Bendigo Hire	Sledding	Sledding event - Portaloo Hire	300.00
772	7/07/2012	Computer Sashes	Show	Utility Dog Club - donated sash	23.35
773	7/07/2012	Computer Sashes	Sledding	Sledding State Cup Sashes	74.39
774	8/07/2012	Dogs Victoria	Membership - VCA Levy	Non-Dogs Vic Insurance levy 1/4 to 30/6/2012	105.00
775	14/07/2012	Bendigo Hire	Sledding	Sledding event - Portaloo Hire	299.20
776*	27/07/2012	Falls Creek Sled Dog Club	Sledding	Sledding - donation	100.00

\*unrepresented cheque

**Financial Report for August 2012****1. STATEMENT OF BANK RECONCILIATION as at 31 August 2012**

		\$	\$	\$
<b>Total Members Funds as of:</b>	<b>1 Aug</b>			<b>14231.01</b>
Cheque account balance as of	1 Aug	<b>5774.66</b>		
Plus income		273.00		
Less expenditure		614.08		
Cheque account balance as of	31 August 2012	<b>5433.58</b>		
Less unrepresented cheques		582.00		
<b>Total as per Cash Book as of:</b>	<b>31 August 2012</b>		<b>4851.58</b>	
Plus balance of Investment account as of:	1 Aug	8556.35		
Plus Investment account interest		10.07		
Less Investment account expenses		1.01		
<b>Bendigo Investment Account total as of:</b>	<b>31 August 2012</b>		<b>8565.41</b>	
<b>Total Members Funds as of:</b>	<b>31 August 2012</b>			<b>13416.99</b>
<b>Representing a LOSS for the month of:</b>	<b>August 2012</b>			<b>-814.02</b>

**2. CHEQUES WRITTEN for the month of August 2012**

Chq No.	Date	Payee	Category	Details	Amount \$
777	7/08/2012	Dogs Victoria	Administration costs - Meeting room hire	Meeting room hire	45.00
778	7/08/2012	Computer Sashes	Show	Show place ribbons	107.80
779	15/08/2012	Computer Sashes	Show	RASV sash donation	112.33
780	21/08/2012	Australia Post	Newsletter - Postage	Postage - August newsletter	68.95
781	21/08/2012	Saturn Graphic Communication	Newsletter - Printing	Printing - August newsletter	180.00
782*	28/08/2012	D Mitchell	Weight Pull	Weight pull - padlocks, weed killer, cable ties	82.00
783*	28/08/2012	Keeshond Club of Victoria	Show	Judge subcontracting fee	500.00

\*unpresented cheque

**Financial Report for September 2012****1. STATEMENT OF BANK RECONCILIATION as at 30 September 2012**

		\$	\$	\$
<b>Total Members Funds as of:</b>	<b>1 Sept</b>			<b>13416.99</b>
Cheque account balance as of	1 Sept	<b>5433.58</b>		
Plus income		2454.00		
Less expenditure		1546.06		
Cheque account balance as of	30 September 2012	<b>6341.52</b>		
Less unpresented cheques		923.00		
<b>Total as per Cash Book as of:</b>	<b>30 September 2012</b>		<b>5418.52</b>	
Plus balance of Investment account as of:	1 Sept	8565.41		
Plus Investment account interest		10.09		
Less Investment account expenses		1.01		
<b>Bendigo Investment Account total as of:</b>	<b>30 September 2012</b>		<b>8574.49</b>	
<b>Total Members Funds as of:</b>	<b>30 September 2012</b>			<b>13993.01</b>
<b>Representing a PROFIT for the month of:</b>	<b>September 2012</b>			<b>576.02</b>

**2. CHEQUES WRITTEN for the month of September 2012**

Chq No.	Date	Payee	Category	Details	Amount \$
784	5/09/2012	Dogs Victoria	Administration costs - Meeting room hire	Meeting room hire	45.00
785	9/09/2012	M R Lindsay	Accounting	Auditor's fee	15.00
786	18/09/2012	Dogs Victoria	Administration costs - VCA Affiliation	Dogs Victoria affiliation fee	303.00
787*	18/09/2012	Garleigh Trophy Centre	Show	Championship Show trophies	458.60
788	23/09/2012	Cadbury Fundraising	Fundraising	Fundraising chocolates	406.77
789*	24/09/2012	Computer Sashes	Show	Championship Show sashes	285.60
790*	24/09/2012	Saturn Graphic Communication	Newsletter - Printing	Printing of October Malamute Mail	96.80
791*	28/09/2012	Dogs Victoria	Administration costs - Meeting room hire	Meeting room hire	45.00

\*unpresented cheque

## Financial Report for October 2012

## 1. STATEMENT OF BANK RECONCILIATION as at 31 October 2012

		\$	\$	\$
<b>Total Members Funds as of:</b>	<b>1 Oct</b>			<b>13993.01</b>
Cheque account balance as of	1 Oct	<b>6341.52</b>		
Plus income		2128.10		
Less expenditure		1490.22		
Cheque account balance as of	31 October 2012	<b>6979.40</b>		
Less unrepresented cheques		1605.14		
<b>Total as per Cash Book as of:</b>	<b>31 October 2012</b>		<b>5374.26</b>	
Plus balance of Investment account as of:	1 Oct	8574.49		
Plus Investment account interest		9.77		
Less Investment account expenses		0.98		
<b>Bendigo Investment Account total as of:</b>	<b>31 October 2012</b>		<b>8583.28</b>	
<b>Total Members Funds as of:</b>	<b>31 October 2012</b>			<b>13957.54</b>
<b>Representing a LOSS for the month of:</b>	<b>October 2012</b>			<b>-35.47</b>

## 2. CHEQUES WRITTEN for the month of October 2012

Chq No.	Date	Payee	Category	Details	Amount \$
792	1/10/2012	S Cumming & L Hewat	Activities	Purchase of activities calendar	\$ 39.99
793	1/10/2012	Reddy Roast	Show	Catering for Championship Show	\$ 124.00
794	1/10/2012	S McPhan	Show & Fundraising	Show - catering & gifts Fundraising - Lolly Jar competition	\$ 139.53
795	3/10/2012	Saturn Graphic Communication	Newsletter - Printing	Printing - October newsletter	\$ 172.00
796	4/10/2012	Australia Post	Newsletter - Postage	Postage - October newsletter	\$ 66.00
797	10/10/2012	Dogs Victoria	Show	Championship Show Levies	\$ 175.00
798	10/10/2012	All Trophies	Activities	Activities trophies, plaques & medallions	\$ 825.34
799	11/10/2012	C&D Trophies	Activities	Activities trophy engraving	\$ 10.00
800	17/10/2012	Dogs Victoria	Advertising	Club heading in VicDog	\$ 185.50
801	23/10/2012	AMRAA	Referral	Donation	\$ 270.00
802	26/10/2012	Dogs Victoria	Membership - VCA Levy	Non-Dogs Victoria insurance levy 1/7-30/9/12	\$ 165.00

\*unrepresented cheque

## Financial Report for November 2012

## 1. STATEMENT OF BANK RECONCILIATION as at 30 November 2012

		\$	\$	\$
<b>Total Members Funds as of:</b>	<b>1 Nov</b>			<b>13957.54</b>
Cheque account balance as of	1 Nov	<b>6979.40</b>		
Plus income		406.00		
Less expenditure		2649.04		
Cheque account balance as of	30 November 2012	<b>4736.36</b>		
Less unrepresented cheques		23.10		
<b>Total as per Cash Book as of:</b>	<b>30 November 2012</b>		<b>4713.26</b>	
Plus balance of Investment account as of:	1 Nov	8583.28		
Plus Investment account income		1009.35		
Less Investment account expenses		0.94		
<b>Bendigo Investment Account total as of:</b>	<b>30 November 2012</b>		<b>9591.69</b>	
<b>Total Members Funds as of:</b>	<b>30 November 2012</b>			<b>14304.95</b>
<b>Representing a PROFIT for the month of:</b>	<b>November 2012</b>			<b>347.41</b>



**2. CHEQUES WRITTEN for the month of November 2012**

Chq No.	Date	Payee	Category	Details	Amount \$
803	7/11/2012	Consumer Affairs Victoria	Administration costs - CAV	Lodgement fee for CAV Annual return	\$ 43.90
804	22/11/2012	AMCV	Funds transfer	Transfer of funds to AMCV investment account	\$ 1,000.00
805*	24/11/2012	S Vanderpol	Activities	Christmas Fun Day catering - meat	\$ 23.10

\*unpresented cheque

**Financial Report for December 2012****1. STATEMENT OF BANK RECONCILIATION as at 31 December 2012**

		\$	\$	\$
<b>Total Members Funds as of:</b>	<b>1 Dec</b>			<b>14304.95</b>
Cheque account balance as of	1 Dec	<b>4736.36</b>		
Plus income		338.00		
Less expenditure		399.20		
Cheque account balance as of	31 December 2012	<b>4675.16</b>		
Less unpresented cheques		23.10		
<b>Total as per Cash Book as of:</b>	<b>31 December 2012</b>		<b>4652.06</b>	
Plus balance of Investment account as of:	1 Dec	9591.69		
Plus Investment account income		8.97		
Less Investment account expenses		0.9		
<b>Bendigo Investment Account total as of:</b>	<b>31 December 2012</b>		<b>9599.76</b>	
<b>Total Members Funds as of:</b>	<b>31 December 2012</b>			<b>14251.82</b>
<b>Representing a LOSS for the month of:</b>	<b>December 2012</b>			<b>-53.13</b>

**2. CHEQUES WRITTEN for the month of December 2012**

Chq No.	Date	Payee	Category	Details	Amount \$
806	2/12/2012	S McPhan	Show & Fundraising	Members' competition - gifts & catering, Fundraising – Christmas Fun Day	74.26
807	2/12/2012	M Gray	Activities	Christmas Fun Day catering & prizes	64.94
808	12/12/2012	Saturn Graphic Communication	Newsletter - Printing	Printing of December Malamute Mail	180.00
809	12/12/2012	Australia Post	Newsletter - Postage	Postage of December Malamute Mail	80.00

\*unpresented cheque

**Financial Report for January 2013****1. STATEMENT OF BANK RECONCILIATION as at 31 January 2013**

		\$	\$	\$
<b>Total Members Funds as of:</b>	<b>1 Jan</b>			<b>14251.82</b>
Cheque account balance as of	1 Jan	<b>4675.16</b>		
Plus income		151.00		
Less expenditure		23.10		
Cheque account balance as of	31 January	<b>4803.06</b>		
Less unpresented cheques		0.00		
<b>Total as per Cash Book as of:</b>	<b>31 January</b>		<b>4803.06</b>	
Plus balance of Investment account as of:	1 Jan	9599.76		
Plus Investment account income		9.20		
Less Investment account expenses		0.92		
<b>Bendigo Investment Account total as of:</b>	<b>31 January</b>		<b>9608.04</b>	
<b>Total Members Funds as of:</b>	<b>31 January</b>			<b>14411.10</b>
<b>Representing a PROFIT for the month of:</b>	<b>January 2013</b>			<b>159.28</b>

**2. CHEQUES WRITTEN for the month of January 2013**

Nil

**3. STATEMENT OF INCOME AND EXPENDITURE – current financial year**

Category	\$	\$	\$	\$	\$	\$	\$	\$	\$
	Jul-12	Aug-12	Sep-12	Oct-12	Nov-12	Dec-12	Jan-13	Year to Date	Previous Year Total
<b>INCOME</b>									
Activities								0.00	122.00
Backpacking			25.00					25.00	0.00
Breeders Directory	50.00		50.00	25.00				125.00	150.00
Fundraising	384.00		833.00	148.00	155.00	158.00	80.00	1758.00	1801.00
Funds transfer to investment account					1000.00			1000.00	0.00
Health - other								0.00	0.00
Interest	9.25	10.07	10.09	9.77	9.35	8.97	9.20	66.70	339.45
Litter registration								0.00	75.00
Membership - Fees	839.00	40.00	415.00	327.00	81.00	53.00	71.00	1826.00	3386.00
Merchandise - Embroidered clothing				15.00		83.00		98.00	228.00
Merchandise - Vets All Natural						5.00		5.00	778.25
Merchandise - Other			48.00	25.60				73.60	88.00
Miscellaneous								0.00	0.16
Newsletter - Advertising		30.00			140.00			170.00	230.00
Newsletter - Printing								0.00	0.00
Petty Cash Float								0.00	117.97
Referral			40.00					40.00	0.00
Show	15.00	203.00	351.00	1390.50		39.00		1998.50	3012.00
Sledding	544.00		230.00					774.00	937.00
Weight Pull	30.00		282.00	167.00				479.00	574.00
Working Dog titles			180.00	30.00	30.00			240.00	240.00
<b>Total Income</b>	<b>1871.25</b>	<b>283.07</b>	<b>2464.09</b>	<b>2137.87</b>	<b>1415.35</b>	<b>346.97</b>	<b>160.20</b>	<b>8678.80</b>	<b>12392.88</b>
<b>EXPENDITURE</b>	<b>Jul-12</b>	<b>Aug-12</b>	<b>Sep-12</b>	<b>Oct-12</b>	<b>Nov-12</b>	<b>Dec-12</b>	<b>Jan-13</b>	<b>Year to Date</b>	<b>Previous Year Total</b>
Accounting			15.00					15.00	25.00
Activities				875.33	23.10	64.94		963.37	1316.99
Administration costs - CAV					43.90			43.90	116.10
Administration - Meeting room hire		45.00	45.00					90.00	259.20
Administration - VCA Affiliation fee			303.00					303.00	293.00
Administration costs - other								0.00	0.00
Advertising - VCA				185.50				185.50	345.50
Bank fees								0.00	2.10
Donation - Oxfam account		1.01	1.01	0.98	0.94	0.90	0.92	5.76	0.00
Fundraising			406.77	19.44		22.00		448.21	1105.19
Funds transfer to investment account					1000.00			1000.00	0.00
Health - Ch'd Scheme								0.00	0.00
Meetings								0.00	16.82
Membership - VCA Insurance levy	105.00			165.00				270.00	450.00
Membership - Other								0.00	28.80
Merchandise - Clothing								0.00	0.00
Merchandise - Vets All Natural								0.00	648.15
Merchandise - Other								0.00	0.00
Miscellaneous								0.00	67.00
Newsletter - Postage		68.95		66.00		80.00		214.95	674.28
Newsletter - Printing		180.00		172.00		180.00		532.00	1267.96
Newsletter - Other								0.00	50.47
Petty Cash Float - Secretary								0.00	0.00
Publicity & Education								0.00	178.25
Referral - donations				270.00				270.00	0.00
Show	23.35	720.13	841.00	419.09		52.26		2055.83	3766.32
Sledding	1248.15							1248.15	1070.57
Stationery								0.00	201.01
Weight Pull		82.00	276.29					358.29	286.87
<b>Total expenditure</b>	<b>1376.50</b>	<b>1097.09</b>	<b>1888.07</b>	<b>2173.34</b>	<b>1067.94</b>	<b>400.10</b>	<b>0.92</b>	<b>8003.96</b>	<b>12169.58</b>
<b>PROFIT/LOSS</b>	<b>494.75</b>	<b>-814.02</b>	<b>576.02</b>	<b>-35.47</b>	<b>347.41</b>	<b>-53.13</b>	<b>159.28</b>	<b>674.84</b>	<b>223.30</b>

# Dogs for Adoption

	<p><b>VIC – Melbourne</b>                  Name: <b>BUDDY &amp; FOXY</b>  <b>FOSTER HOME REQUIRED</b>                  Sex: Male &amp; Female - desexed                  Breed: Alaskan Malamute                  Age: 3 &amp; 2 years</p>
	<p><b>VIC - Melbourne</b>                  Name: <b>DARTANIAN</b>                  Sex: Male - desexed                  Breed: Alaskan Malamute                  Age: 4 years</p>
	<p><b>VIC - Shepparton</b>                  Name: <b>YOGI</b>                  Sex: Male - desexed                  Breed: Alaskan Malamute                  Age: 2 years</p>
	<p><b>VIC - Melbourne</b>                  Name: <b>KYAH</b>                  Sex: Female - desexed                  Breed: Malamute x Husky                  Age: 5 years</p>
	<p><b>NSW - Blacktown</b>                  Name: <i>Not known</i>                  Sex: Male - desexed                  Breed: Alaskan Malamute                  Age: 4-6 years</p>
	<p><b>NSW - Sydney</b>                  Name: <b>PASQUALE</b>                  Sex: Male - desexed                  Breed: Alaskan Malamute                  Age: 7 years</p>
	<p><b>NSW - Sydney</b>                  Name: <b>KIRRA &amp; GIZMO</b>  <b>URGENT FOSTER CARER REQUIRED</b>                  Sex: Female &amp; Male - desexed                  Breed: Alaskan Malamutes                  Age: 12 &amp; 9 years</p>
	<p><b>NSW - Sydney</b>                  Name: <b>JIN</b>                  Sex: Male - desexed                  Breed: Alaskan Malamute                  Age: 6 years</p>
	<p><b>NSW - Sydney</b>                  Name: <b>FIFI</b>                  Sex: Female - desexed                  Breed: Malamute x Akita                  Age: 5 years</p>

	<p><b>NSW - Sydney</b>                  Name: <b>SPIRIT</b>                  Sex: Male - desexed                  Breed: Alaskan Malamute                  Age: 1 year</p>
	<p><b>NSW - Coffs Harbour</b>                  Name: <b>SASHA</b>                  Sex: Female - desexed                  Breed: Malamute x Border Collie</p>
	<p><b>NSW - Sydney</b>                  Name: <b>TARO - to be rehomed with Teddy</b>                  Sex: Female - desexed                  Breed: Malamute x Samoyed                  Age: 4 years</p>
	<p><b>NSW - Sydney</b>                  Name: <b>TEDDY - to be rehomed with Taro</b>                  Sex: Male - desexed                  Breed: Malamute x Samoyed                  Age: 3 years</p>
	<p><b>NSW - Sydney</b>                  Name: <b>HUSKY</b>                  Sex: Male - desexed                  Breed: Alaskan Malamute                  Age: 7 years</p>
	<p><b>NSW - Sydney</b>                  Name: <b>SKYE</b>                  Sex: Female - desexed                  Breed: Alaskan Malamute                  Age: 2 years</p>
	<p><b>NSW - Sydney</b>                  Name: <b>SHADOW</b>                  Sex: Female - desexed                  Breed: Alaskan Malamute                  Age: 5 years</p>
	<p><b>ACT - Canberra</b>                  Name: <b>SHENNA</b>                  Sex: Female - desexed                  Breed: Alaskan Malamute                  Age: 2 years</p>
	<p><b>NSW - Sydney</b>                  Name: <b>BUTCH</b>                  Sex: Male - desexed                  Breed: Malamute x GSD                  Age: 5 years</p>
	<p><b>NSW - Berkshire</b>                  Name: <b>MISHKA</b>                  Sex: Female - desexed                  Breed: Malamute x Husky                  Age: 7 years</p>
	<p><b>QLD - Toowoomba</b>                  Name: <b>WOLFE</b>                  Sex: Male - desexed                  Age: 1 year                  Breed: Alaskan Malamute</p>

	<p><b>QLD - Yamanto</b>                  Name: <b>MOTLEY</b>                  Sex: Male - desexed                  Age: 3 years                  Breed: Alaskan Malamute</p>
	<p><b>QLD - Rockhampton</b>                  Name: <b>LUCY</b>                  Sex: Female - desexed                  Age: ?                  Breed: Malamute X Husky</p>
	<p><b>QLD - Noosa RSPCA</b>                  Name: <b>TRIGGER</b>                  Sex: Male - desexed                  Age: ?                  Breed: Alaskan Malamute</p>
	<p><b>QLD - Nerang</b>                  Name: <b>MAPLE</b>                  Sex: Female - desexed                  Age: 4 years                  Breed: Alaskan Malamute</p>
	<p><b>QLD - Slacks Creek</b>                  Name: <b>GUS</b>                  Sex: Male - desexed                  Age: 18 months                  Breed: Alaskan Malamute</p>
	<p><b>QLD - Slacks Creek</b>                  Name: <b>SIMBA</b>                  Sex: Male - desexed                  Age: 7 years                  Breed: Alaskan Malamute</p>
	<p><b>QLD - Holmview</b>                  Name: <b>DIAMOND</b>                  Sex: Male - desexed                  Age: 2 years                  Breed: Alaskan Malamute</p>
	<p>Name: <b>RUFUS</b>                  Sex: Male - desexed                  Age: 1 year                  Breed: Alaskan Malamute</p>
	<p><b>SA - Adelaide</b>                  Name: <b>BUKKA</b>                  Sex: Male - desexed                  Breed: Malamute x Husky                  Age: 1 year</p>
	<p><b>WA - Perth</b>                  Name: <b>LUCY</b>                  Sex: Female - desexed                  Age: 5 years                  Breed: Alaskan Malamute</p>
	<p><b>WA - Perth</b>                  Name: <b>HONEY</b>                  Sex: Female - desexed                  Age: 2 years                  Breed: Alaskan Malamute</p>

Please visit the AMCV website [www.amcv.org.au](http://www.amcv.org.au) for more information on dogs for adoption, or visit AMRAA on Facebook.

# Obedience Corner with Marty Cord



Welcome to the newest feature of the Mallie Mail. Through this feature I am hoping to reach out to members both new and old who may be having difficulties in getting their dogs to do what they are told. I have been training dogs for 12 years and I am finally about to take the plunge and do my certificate three in Canine Behaviour, Obedience and Psychology. My strongest belief is that through natural life style training any dog of any age of any breed can be trained or have their action corrected in a positive way which will benefit both the owner and your dogs.



### Why is Obedience Training Important?

From the moment you first bring your puppy or adoptee home you will want them to behave in a certain way. You won't want to have your new addition fighting with current pets or other animals so the correct socialisation is important. Not jumping up on visitors when they enter your home, toilet training, not taking food without permission, right down to simple actions like sit, drop and roll over can be taught for pleasure and to help them fit in to their new environment

I would like to take this one step further though. What if training your dog in Obedience could save its very life? In my fourth year of training dogs, a friend of mine Vinnie, who was also a trainer, had a 3 year old rescue called Snake. Snake had been trained very well in Obedience and Vinnie was a very thorough owner making sure his back yard was always safe and secure so his dogs couldn't escape.

One night Vinnie was out and Snake was home alone in the backyard. When Vinnie got home he went out to greet Snake but he was nowhere to be seen. Vinnie's house backs onto a 100 KPH dual-lane highway with a locked gate in the back fence. Snake had somehow managed to get out of the back yard and after a brief search Vinnie located Snake across the highway in some bushes on the other side. Somehow he had managed to cross four lanes without being hit and was having a great time sniffing and barking at cars. Vinnie knew if he called him, Snake would run across the freeway and probably get hit so he decided against it and started to cross the road to his dog willing him not to move.

The worst possible thing then happened. Snake looked up and noticed his dad, home and coming towards him. He then began running to the edge of the freeway. Quick thinking by Vinnie then saved Snakes life. Vinnie yelled at the top of his lungs "DROP" in which Snake immediately went into a drop with his front paws on the edge of the bitumen. Vinnie then proceeded across the Highway to Snakes side, then taking him by the collar, safely led him home. Due to this Obedience training disaster was avoided and Snake got home safely without a detour to the vets.

Over the coming months if anyone has any obedience questions that I can answer for them in this feature please don't hesitate to email me the question at [mtcord@gmail.com](mailto:mtcord@gmail.com). All names can be changed to promote privacy if you wish and there are no silly questions just questions that go unanswered.

Remember your dog rarely makes mistakes they just don't understand what you want of them.

Marty Cord

AMCV Obedience Coordinator

**\*Our Mals need YOU\***

[www.amraa.org.au](http://www.amraa.org.au)

**Please help save more lives & apply to FOSTER a Malamute for us**  
*You too could experience this look of unconditional love*

# 2013 Show Point Score Competition Rules

The competition shall run from 1<sup>st</sup> January to 31<sup>st</sup> December, 2013

1. All Championship shows held in Victoria shall count (**except the Melbourne Royal & AMCV Championship Show**) and the winners will be awarded from the ten (10) best results submitted. To be eligible for an award in the Show Point Score Competition, all registered owners of the exhibit must be current AMCV Members. Points will only be allocated if all registered owners are financial members of the AMCV at the time of the show for which results are being submitted.
2. The onus is on exhibitors to send their results to the Show Secretary, no later than one (1) month after the event together with a marked catalogue, (front cover and Judge's page along with the Alaskan Malamutes fully marked) including the best of classes in breed marked with a circle or asterisk. The exhibitor submitting the results must also sign on the front of the catalogue.
3. One exhibitor may send in the results for all those at a show, but all exhibitors who wish their results to be submitted for the competition must sign the front of the catalogue as some people may not wish to be included in the Point Score Competition.
4. There is no limit to the number of results that can be submitted, however only a competitor's ten (10) best results submitted will be published as the year progresses. Once a competitor has reached the ten (10) shows the Show Secretary will automatically adjust the points accordingly.
5. A complete record of shows submitted together with catalogues will be kept by the Show Secretary in the event of any dispute arising.
6. Trophies will be awarded to the registered owner/s of the winners at the time of submitting their dog's last results.
7. The competition will consist of Most Successful Alaskan Malamute, Most Successful Dog, Most Successful Bitch and Class awards.
  - 8.1 Most Successful Alaskan Malamute Dog and Bitch  
Most Successful Dog and Bitch will be awarded to the dog and bitch which has the most points from the ten (10) best shows submitted. Points will be awarded to Challenge winners on the basis of one (1) point for each dog or bitch beaten including one (1) for your dog or bitch, to a maximum of twenty-five (25) points per show
  - 8.2 Most Successful Alaskan Malamute  
Most Successful Alaskan Malamute will be awarded to the Dog or Bitch which has the highest number of points from their ten (10) best shows submitted. Points will be awarded to Best of Breed and Challenge winners on the basis of one (1) point for every dog or bitch beaten including one (1) for your own dog, to a maximum of twenty-five (25) points per show.
- 8.3 Class awards  
Awards will also be given for:  
Best Baby Puppy - Dog and Bitch  
Best Minor Puppy – Dog and Bitch  
Best Puppy – Dog and Bitch  
Best Junior – Dog and Bitch  
Best Intermediate – Dog and Bitch  
Best Australian Bred - Dog and Bitch  
Best Open – Dog and Bitch  
Class points will be allocated as follows: 1 point for every dog or bitch beaten in your class 1<sup>st</sup>, 2<sup>nd</sup> and 3<sup>rd</sup> placings including one (1) for your exhibit, also one (1) point for every exhibit of the opposite sex if you take your class of breed, to a maximum of twenty-five (25) points per show. Example: If there are 6 exhibits shown in a class, 1<sup>st</sup> wins six (6) points, 2<sup>nd</sup> five (5) points, 3<sup>rd</sup> four (4) points. If this 1<sup>st</sup> place winner then wins its class of breed and four (4) of the opposite sex were shown, it gains a total of ten (10) points.

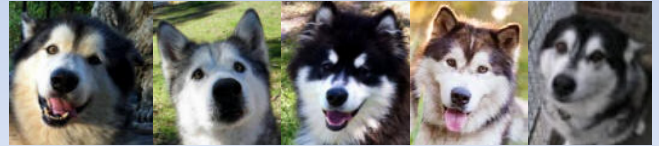
## Can you Help?

AMRAA are desperate for help with donations of worming and flea treatments, a bowl, brush or rake that are required for Malamutes in need of new homes.

If you are able to donate any of these items for the rescue dogs please contact Michele at AMRAA:

[michele@amraa.org.au](mailto:michele@amraa.org.au)

Any donations would be much appreciated, no matter how big or small.



*Thank you!*



FACEBOOK.COM/OFF THE LEASH DAILY DOG CARTOONS

## Donations Required for the 2013 STATE CUP RACE

Sash donations are invited for the 2013 State Cup Sled Dog Race being held on 24 & 25 August at the You Yangs. Donations required are \$15.00 and the donor will be acknowledged on the sash.

If you are able to make a donation, please contact the Secretary at [info@amcv.org.au](mailto:info@amcv.org.au) – donations may be made by cheque/money order or by direct deposit into the AMCV bank account.

## Breeders' Directory

Kennel Name	Location	Contact Name	Phone No.	Other Contact Information
BELLTREES	Campbelltown, NSW	Cheryl Harrison	(02) 4631 1920	Email: <a href="mailto:belltree@ispdr.net.au">belltree@ispdr.net.au</a>
CHEKODY	Canberra ACT	Mark Titley & Melanie Saxinger	0448 389 970	Email: <a href="mailto:malamutes@chekody.com">malamutes@chekody.com</a> Website: <a href="http://www.chekody.com">www.chekody.com</a>
HYKUP	Woodend, VIC	Ian Luke	0417 103 615	Email: <a href="mailto:guttervac-cv@cirruscomms.com.au">guttervac-cv@cirruscomms.com.au</a> Website: <a href="http://www.hykup.vpweb.com.au">www.hykup.vpweb.com.au</a>
KATAKU	Pearcedale, VIC	Merv & Shelley Turner	(03) 5978 6001	Email: <a href="mailto:kataku@bigpond.net.au">kataku@bigpond.net.au</a> Website: <a href="http://www.dishlickers.com.au">www.dishlickers.com.au</a>
TANOME	Clyde North, VIC	Sharen McPhan	0410 192 210	Email: <a href="mailto:sharen.mcphan@bigpond.com">sharen.mcphan@bigpond.com</a> Website: <a href="http://www.tanome.com">www.tanome.com</a>



Panda &amp; Jethro Vanderpol



Mel Gray's Chardy

## Dog & Driver Point Score Competition Rules



The AMCV conducts a sledding point score competition each sledding season. The purpose of this competition is to encourage participation and promote events. However, the point score competition is more than a reward for attendance and participation, but is intended to determine, and then reward, the best performed teams of the season.

Classes on offer for the Sledding Dog & Driver point score will be:

- Limited 6-dog
- Limited 4-Dog
- Limited 2-Dog
- Limited 1-Dog

The "team" consists of both Driver and Dog(s).

A calendar of eligible sledding events, sledding results and point score updates will be printed in the Malamute Mail when they become available.

### Eligibility:

For a team to compete in the Dog and Driver point score competition the dog team must consist entirely of purebred, ANKC registered Alaskan Malamutes and the driver must be an AMCV member at the time of the nominated event. Team drivers must provide details of the registered name and registration number for each Alaskan Malamute in the team on the event entry form.

### Nominated Events:

The sledding events in which points can be scored towards this competition will be listed in "The Malamute Mail".

Classes or events which do not attract entries will not be eligible for inclusion in the point score calculation determining end of season standings.

Sledding point score events may be altered at the discretion of the Sledding Co-ordinator with the approval of the Committee at any time during the season in the event of any event being cancelled or class entry being restricted or altered, or should a class receive no entries.

Alterations to point score events will be published in the next available issue of "The Malamute Mail".

### Awarding of Points:

- Competitors must be current AMCV members at the time of the event to be eligible for awarding of points.
- Points will be awarded based on the final results of each of the nominated events. Points are allocated on the basis of 100 points to the first placegetter, 99 points to 2nd place, 98 points to 3rd place and so on.
- More than one eligible team must commence the race for points to be allocated for that class, regardless of the number of teams that finish the race.
- The number of results that will count towards the sledding point score total will represent as close to two thirds (over 50% and not more than 75%) of the eligible events as possible.
- In the event of a tie for a placing in any point score class/place both entries will receive the award.

### Eligible Events:

- Eligible sledding events will be published in the AMCV newsletter.
- The number of events to count towards the point score competition may be subject to change in the event of a race cancellation or a class not being contested.
- An event is not deemed to be an eligible point score event for a class where that class is not contested.

### Rookie of the Year Award:

Rookie of the Year will be awarded to the driver who achieves the highest placing in the Dog & Driver Point Score in their first year of competing in sledding events.

### 2013 Competition:

*Eligible events: AMCV Sled Dog Race events (7) plus Goldseekers Sled Dog Race.*

*Best 5 results from 8 possible events to count towards final score.*

# Activities Day

Mount Macedon 17 March



## Windchill Dog Gear

*Heavy-duty dog gear for working breeds*

PO Box 41, Hurstbridge, 3099

Phone: 03 9714 8540

Fax: 03 9714 8303

Email: [windchill@bigpond.com.au](mailto:windchill@bigpond.com.au)



- Sledding, Weight-Pull & Puppy Harnesses
- Car / Walking Harnesses & Walking Belts
- Collars & Leads - range of styles and sizes
- Ganglines for all team sizes
- Canine backpacks & fold-up water bowls
- Dog Stakes, Stake-out Lines & Drop lines
- Embroidered name or phone number tags  
*and more!*

*We make items to suit dogs of all sizes.  
Personalised embroidery available.*

Visit our website for a full product list, photos, harness measuring instructions, price list & order form.

**[www.windchill.com.au](http://www.windchill.com.au)**

Credit Cards & Direct Deposit payments accepted  
Mail Order Service

If undeliverable please return to: The Newsletter Editor PO Box 41  
Hurstbridge 3099 **The Malamute Mail**  
Print Post Approved Publication No. 0031995100004

**SURFACE  
MAIL**

POSTAGE PAID  
AUSTRALIA

---

*The Alaskan Malamute Club, Victoria (Inc.)*

---